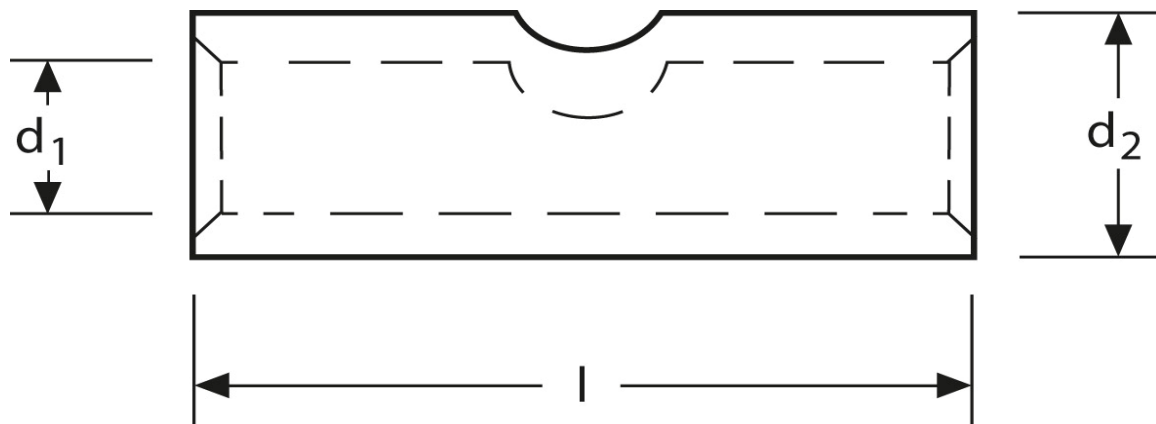


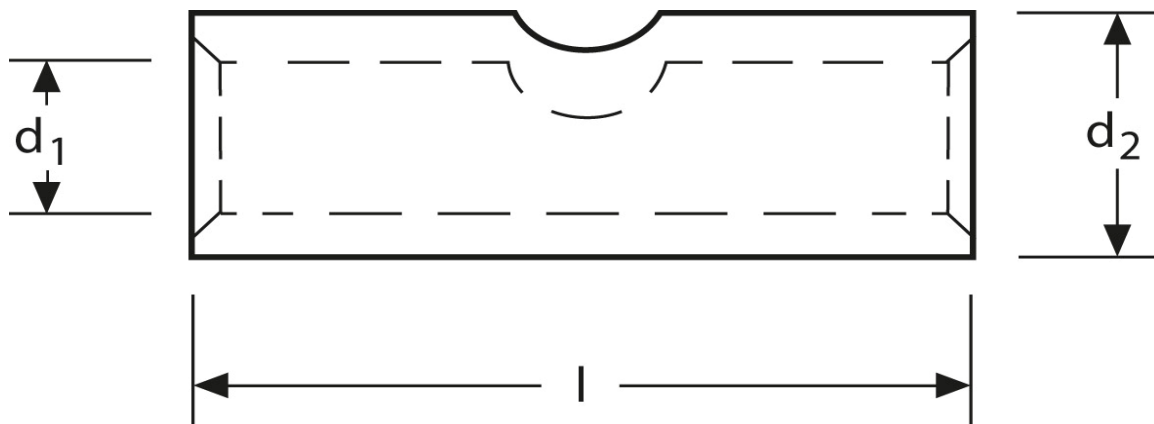
**Pressverbinder**  
 6 mm<sup>2</sup>



Art.Nr.	Werkstoff	Oberfläche		
K 3132006	E-CU	galv. Sn	3,1 / 1000	100
	$d_1$	$l$	$d_2$	Kennziffer
in mm:	3,8	30	5,5	5

Stand: 29.09.2014

## Compression joints 6 mm<sup>2</sup>



part no.	material	surface		
K 3132006	E-CU	tin-plated	3,1 / 1000	100
	$d_1$	$l$	$d_2$	code
in mm:	3,8	30	5,5	5

date: 29.09.2014