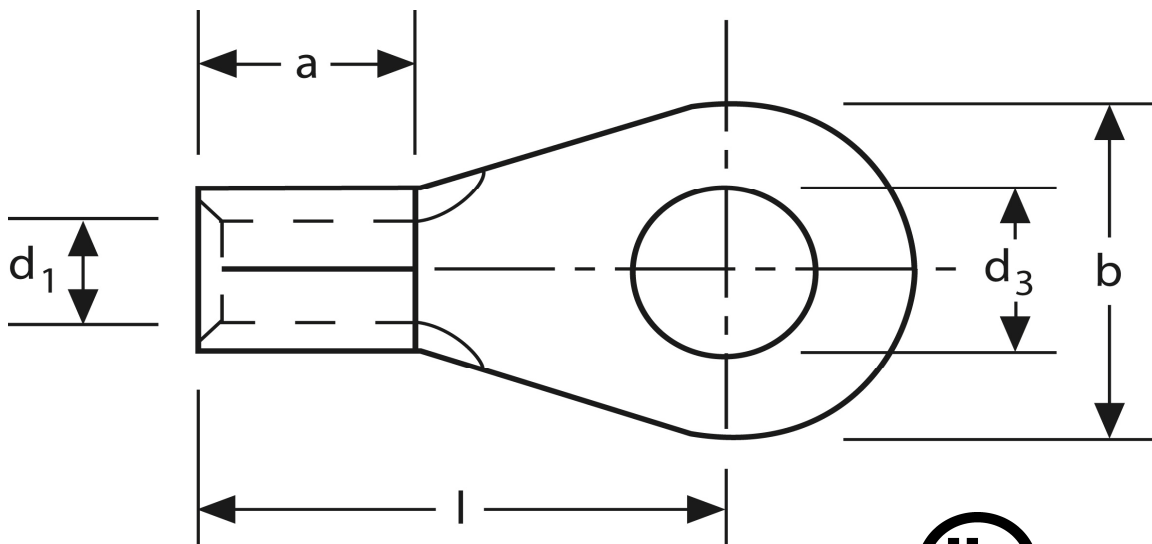


Quetschkabelschuhe

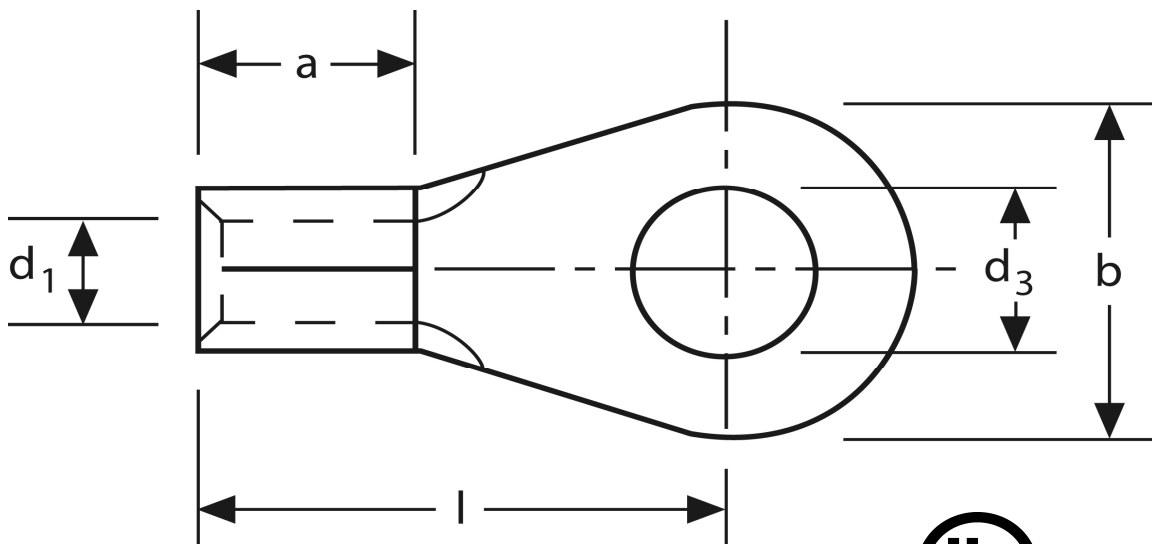
Ringform
35 mm² M 6



Art.Nr.	Werkstoff	Oberfläche		
K 307060	E-CU	galv. Sn	10,1 / 1000	200
	d ₃	d ₁	b	
in mm:	6,5	9,0	15	
	l	a	s	
in mm:	26	12	1,6	

Stand: 08.07.2014

Solderless terminals
ring-type
35 mm² M 6



part no.	material	surface		
K 307060	E-CU	tin-plated	10,1 / 1000	200
	d₃	d₁	b	
in mm:	6,5	9,0	15	
	l	a	s	
in mm:	26	12	1,6	

date: 08.07.2014