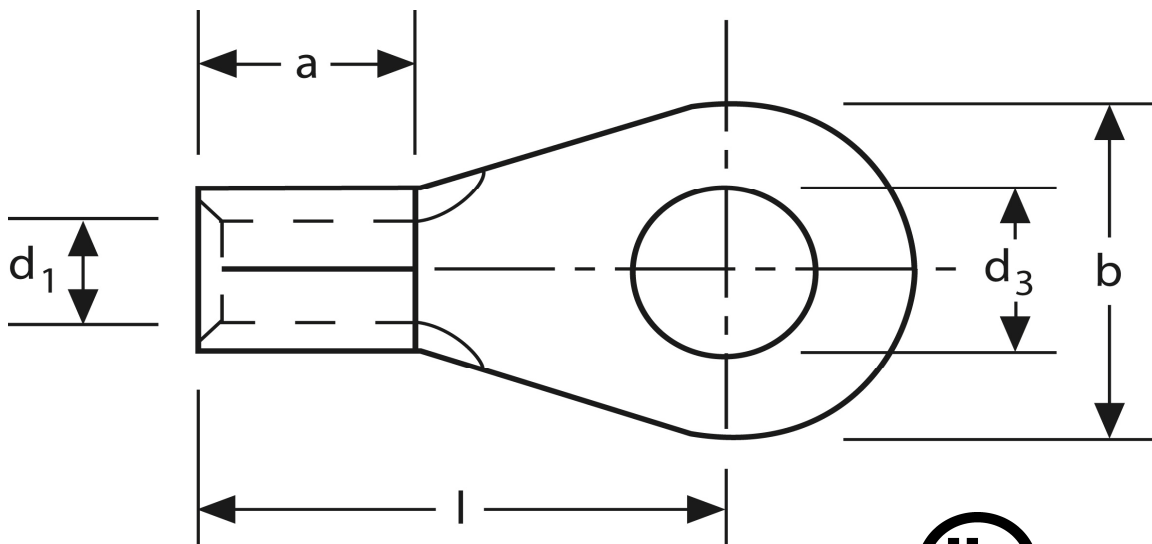


Quetschkabelschuhe

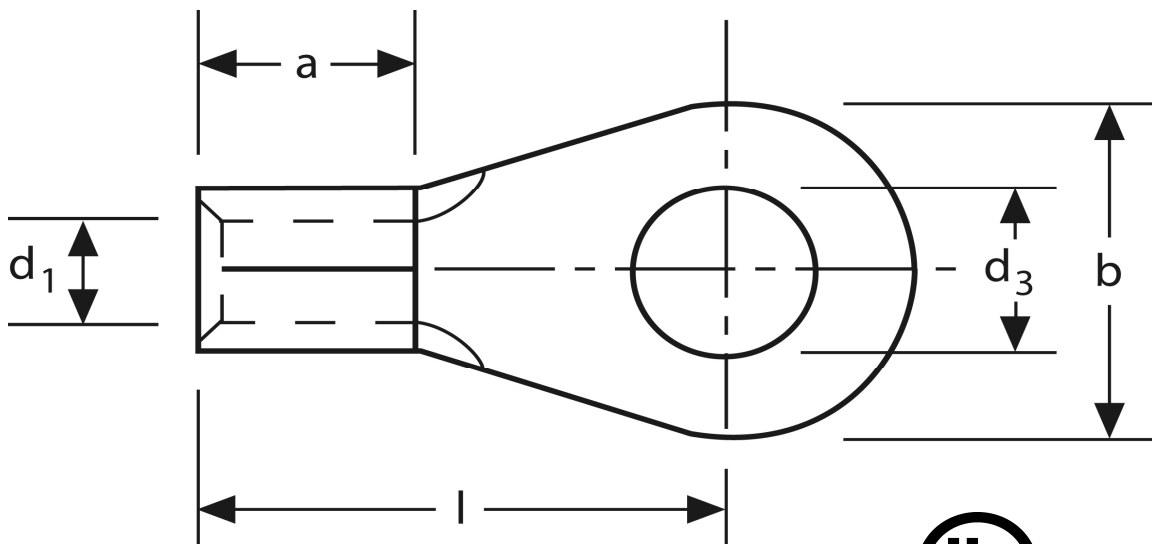
Ringform
2,5 mm² M 5



Art.Nr.	Werkstoff	Oberfläche		
K 302050	E-CU	galv. Sn	0,90 / 1000	1.000
	d₃	d₁	b	
in mm:	5,3	2,3	10	
	l	a	s	
in mm:	14	5	0,8	

Stand: 08.07.2014

Solderless terminals
ring-type
2,5 mm² M 5



part no.	material	surface		
K 302050	E-CU	tin-plated	0,90 / 1000	1.000
	d₃	d₁	b	
in mm:	5,3	2,3	10	
	l	a	s	
in mm:	14	5	0,8	

date: 08.07.2014