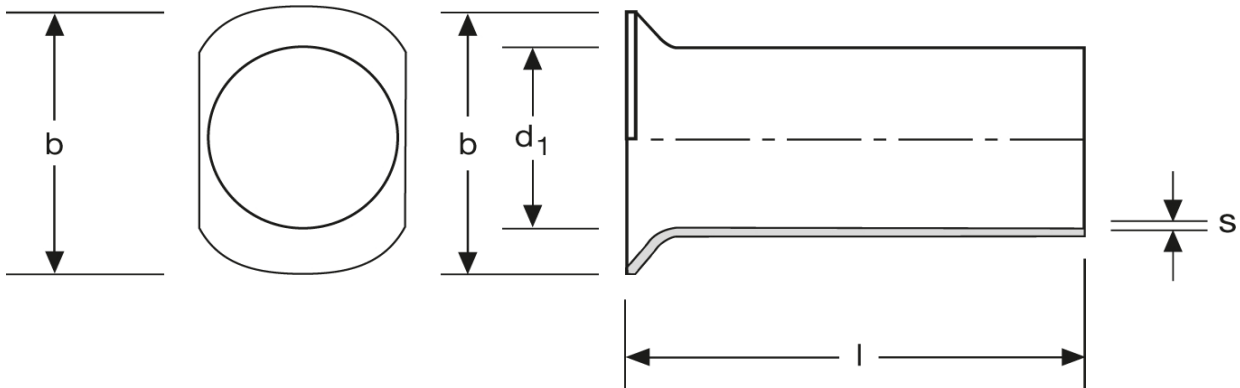


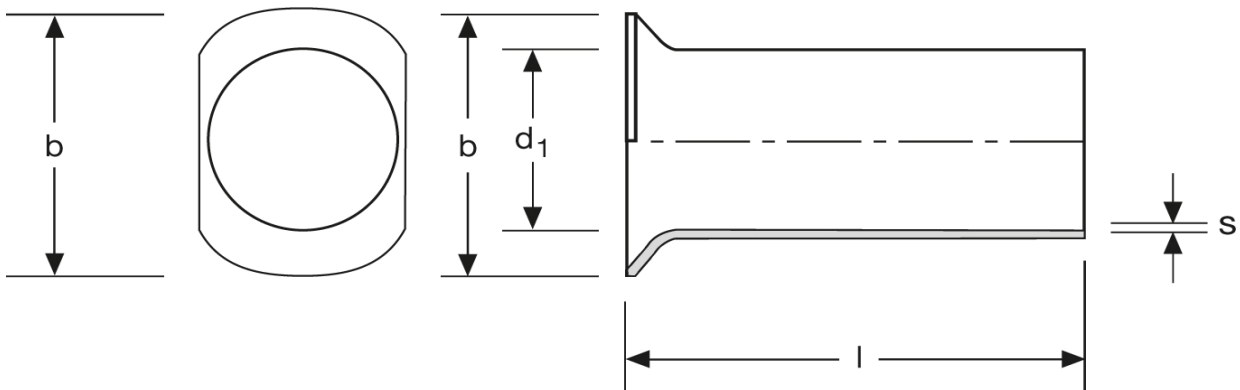
**Twin - Aderendhülsen**  
 Typ B - ovaler Kragen  
 4 mm<sup>2</sup> - 12 mm



Art.Nr.	Werkstoff	Oberfläche		
A 1701200	Cu-ETP	galv. Sn	0,303/1000	1.000
	$l$	$d_1$	$b$	$s$
in mm:	13,0	3,8	6,0	0,20

Stand: 04.07.2014

**Twin cord end-sleeves**  
 type B - oval collar  
 4 mm<sup>2</sup> - 12 mm



part no.	material	surface		
A 1701200	Cu-ETP	tin-plated	0,303/1000	1.000
	<b>l</b>	<b>d<sub>1</sub></b>	<b>b</b>	<b>s</b>
<b>in mm:</b>	<b>13,0</b>	<b>3,8</b>	<b>6,0</b>	<b>0,20</b>

date: 04.07.2014