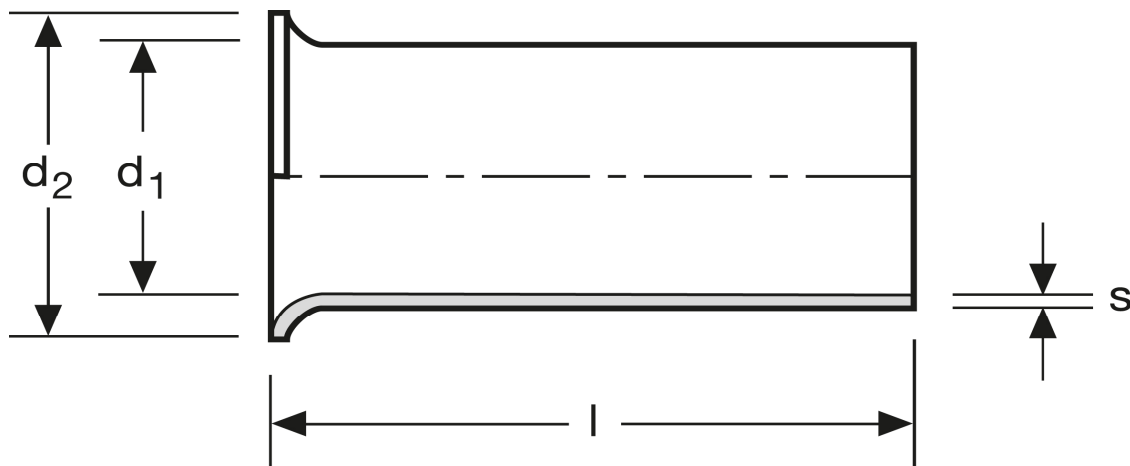


## Aderendhülsen

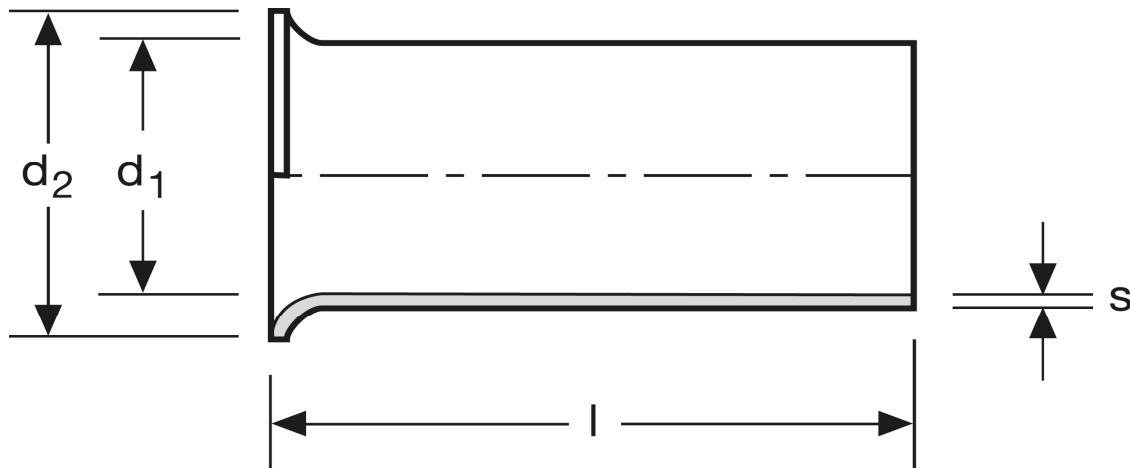
0,75 mm<sup>2</sup> - 15 mm



Art.Nr.	Werkstoff	Oberfläche		
A 106150	Cu-ETP	galv. Sn	0,096/1000	1.000
	l	d <sub>1</sub>	d <sub>2</sub>	s
in mm:	15	1,3	2,3	0,15

Stand: 01.07.2014

**Cord end-sleeves**  
 0,75 mm<sup>2</sup> - 15 mm



art.no.	material	surface		
A 106150	Cu-ETP	tin plated	0,096/1000	1.000
	$l$	$d_1$	$d_2$	$s$
in mm:	15	1,3	2,3	0,15

Date: 01.07.2014