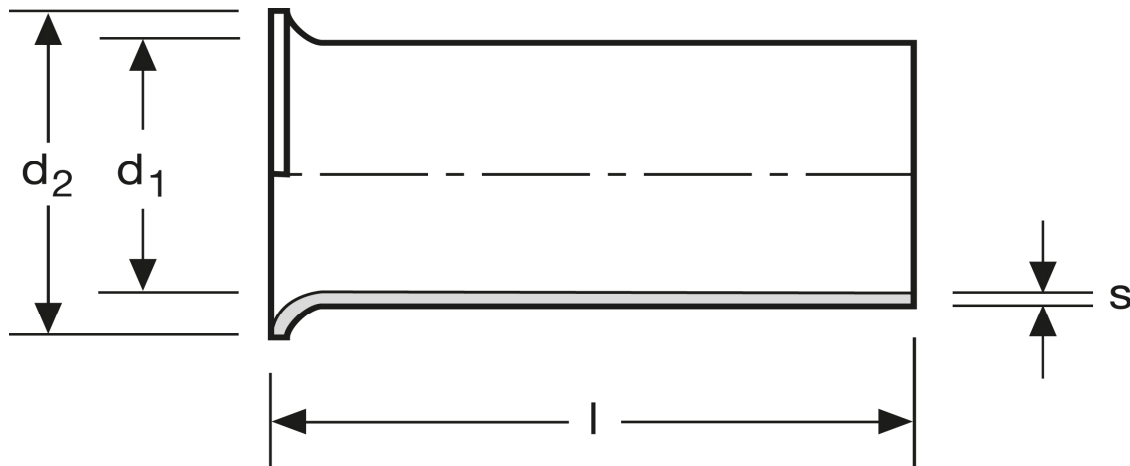


Aderendhülsen

0,5 mm² - 6 mm

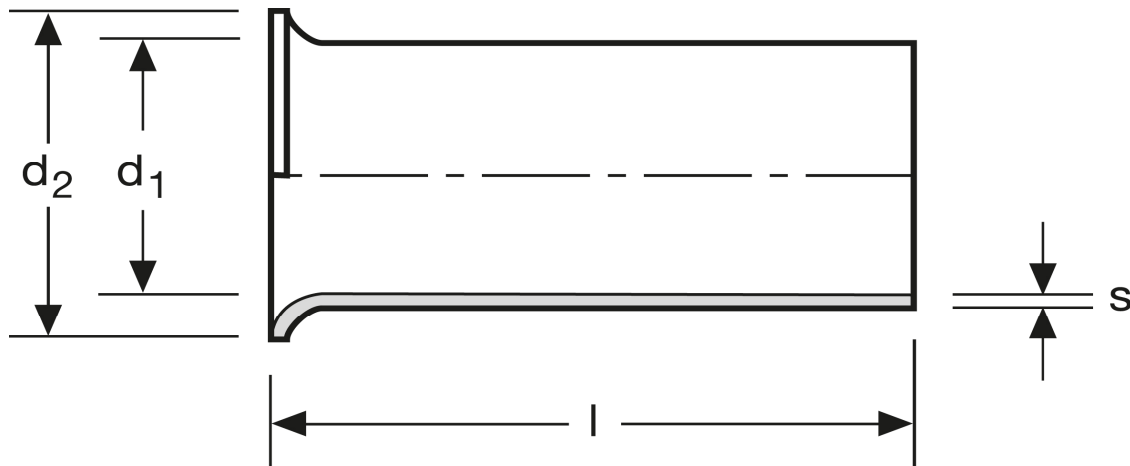


Art.Nr.	Werkstoff	Oberfläche		
A 105060	Cu-ETP	galv. Sn	0,034/1000	1.000
	l	d ₁	d ₂	s
in mm:	6	1,1	2,1	0,15

Stand: 26.06.2014

Cord end-sleeves

0,5 mm² - 6 mm



art.no.	material	surface		
A 105060	Cu-ETP	tin plated	0,034/1000	1.000
	l	d ₁	d ₂	s
in mm:	6	1,1	2,1	0,15

Date: 26.06.2014