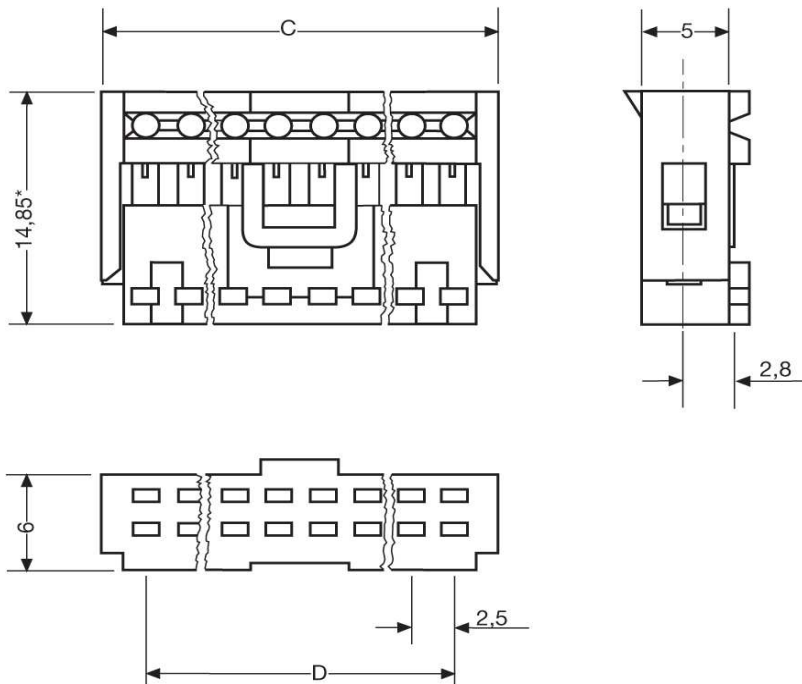
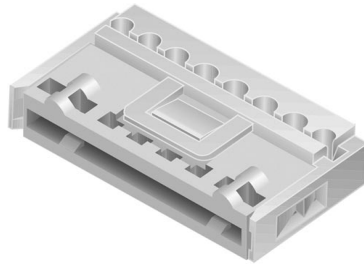




Federleisten in Schneidklemmtechnik

MKFL 13260



Katalogseite: 5.02

Art.Nr.	Massivleiter Ø	Litze. 7-drähtig	Isolation Ø
MKFL 13266-6-1-606	0,4	0,14	1,2 - 1,5
	C	D	Polzahl
in mm:	17,4	12,5	6