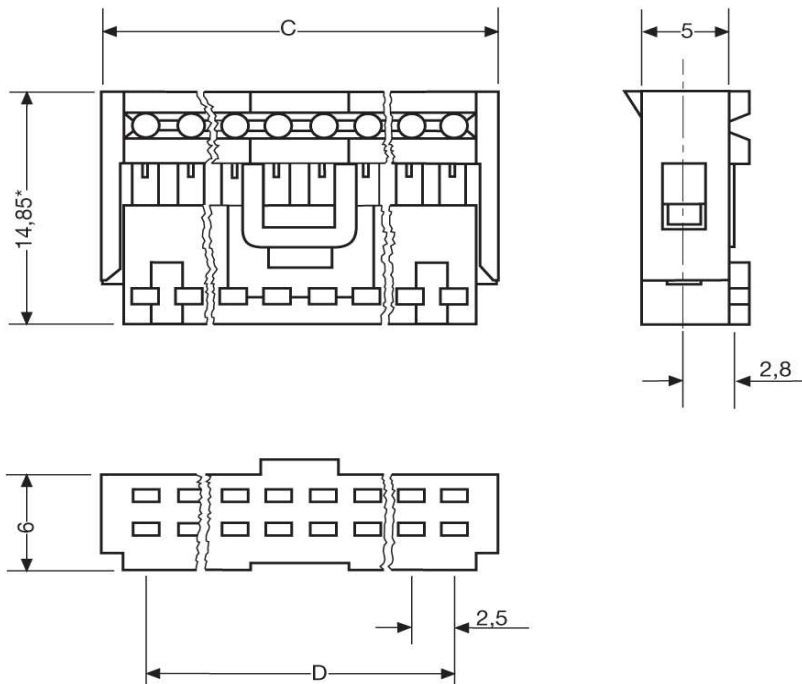
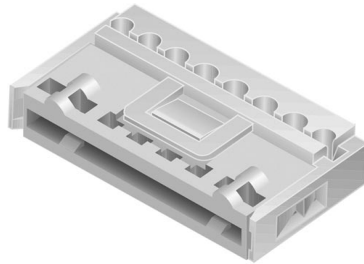




Federleisten in Schneidklemmtechnik

MKFL 13260



Katalogseite: 5.02

Art.Nr.	Massivleiter Ø	Litze. 7-drähtig	Isolation Ø
MKFL 13263-6-0-303	0,5 - 0,6	0,22 - 0,25	1,2 - 1,5
	C	D	Polzahl
in mm:	9,9	5,0	3