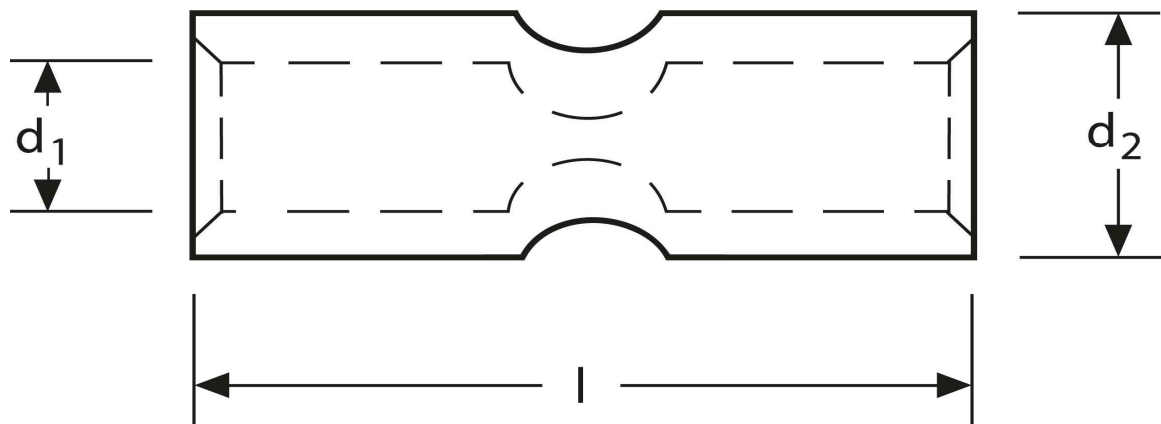


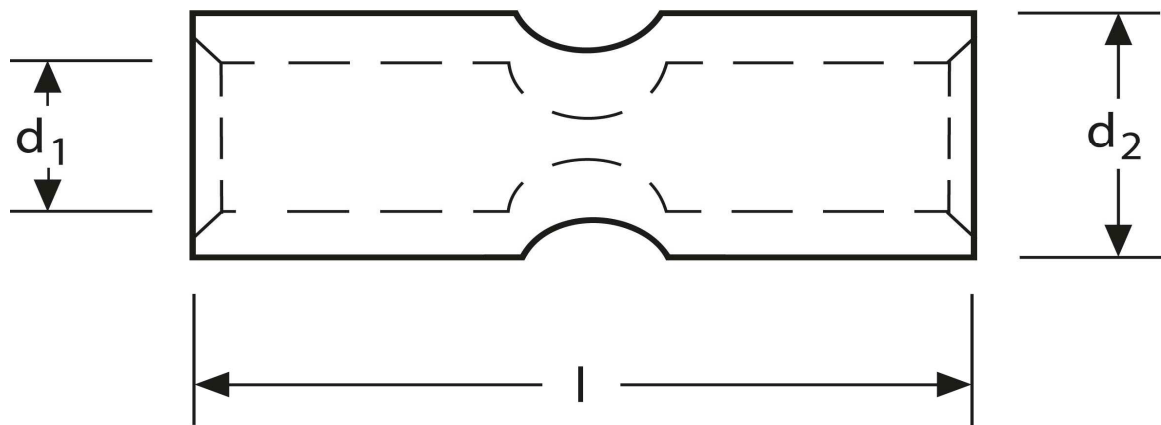
## Kerbverbinder 300 mm<sup>2</sup>



Art.Nr.	Werkstoff	Oberfläche		
KV 332300	E-CU	galv. Sn	219,4 / 1000	5
	<b>d<sub>1</sub></b>	<b>l</b>	<b>d<sub>2</sub></b>	<b>s</b>
<b>in mm:</b>	<b>23,5</b>	<b>100</b>	<b>29,5</b>	<b>3,0</b>

Stand: 09.09.2014

**Connectors**  
 300 mm<sup>2</sup>



part no.	material	surface		
KV 332300	E-CU	tin-plated	219,4 / 1000	5
	$d_1$	$l$	$d_2$	$s$
in mm:	23,5	100	29,5	3,0

date: 09.09.2014