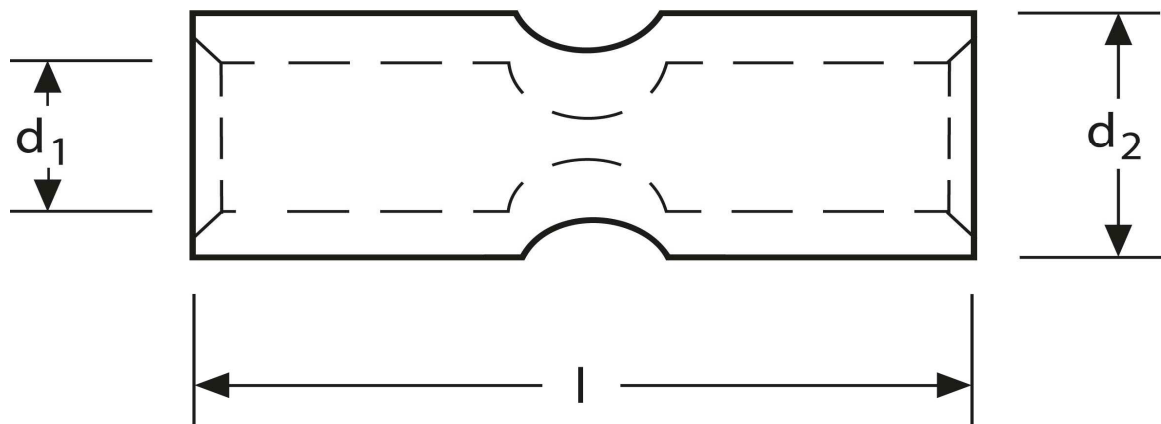


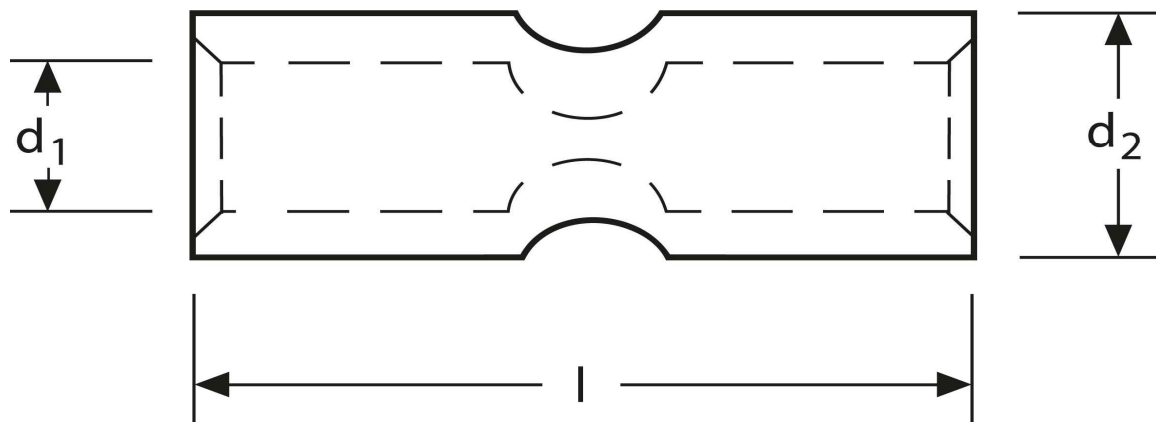
## Kerbverbinder 240 mm<sup>2</sup>



Art.Nr.	Werkstoff	Oberfläche		
KV 332240	E-CU	galv. Sn	138,2 / 1000	10
	<b>d<sub>1</sub></b>	<b>l</b>	<b>d<sub>2</sub></b>	<b>s</b>
<b>in mm:</b>	21,0	85	26,0	2,5

Stand: 09.09.2014

**Connectors**  
 240 mm<sup>2</sup>



part no.	material	surface		
KV 332240	E-CU	tin-plated	138,2 / 1000	10
	$d_1$	$l$	$d_2$	$s$
in mm:	21,0	85	26,0	2,5

date: 09.09.2014