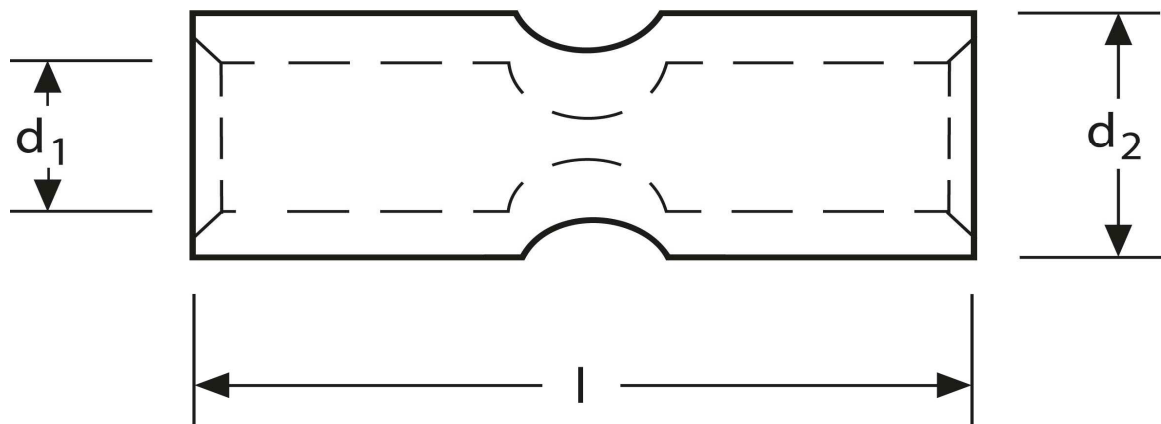


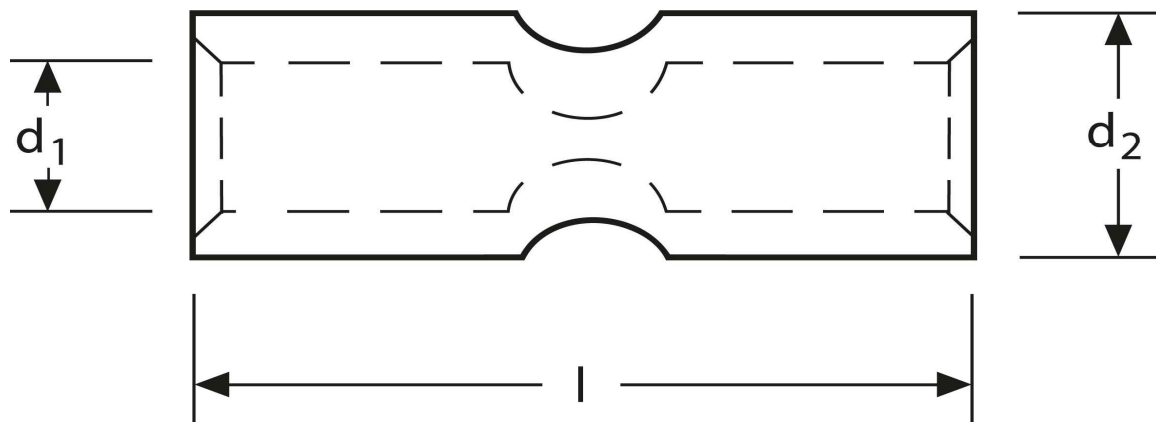
## Kerbverbinder 50 mm<sup>2</sup>



Art.Nr.	Werkstoff	Oberfläche		
KV 332050	E-CU	galv. Sn	33,6 / 1000	50
	<b>d<sub>1</sub></b>	<b>l</b>	<b>d<sub>2</sub></b>	<b>s</b>
<b>in mm:</b>	10,0	50	14,0	2,0

Stand: 09.09.2014

**Connectors**  
 50 mm<sup>2</sup>



part no.	material	surface		
KV 332050	E-CU	tin-plated	33,6 / 1000	50
	$d_1$	$l$	$d_2$	$s$
in mm:	10,0	50	14,0	2,0

date: 09.09.2014