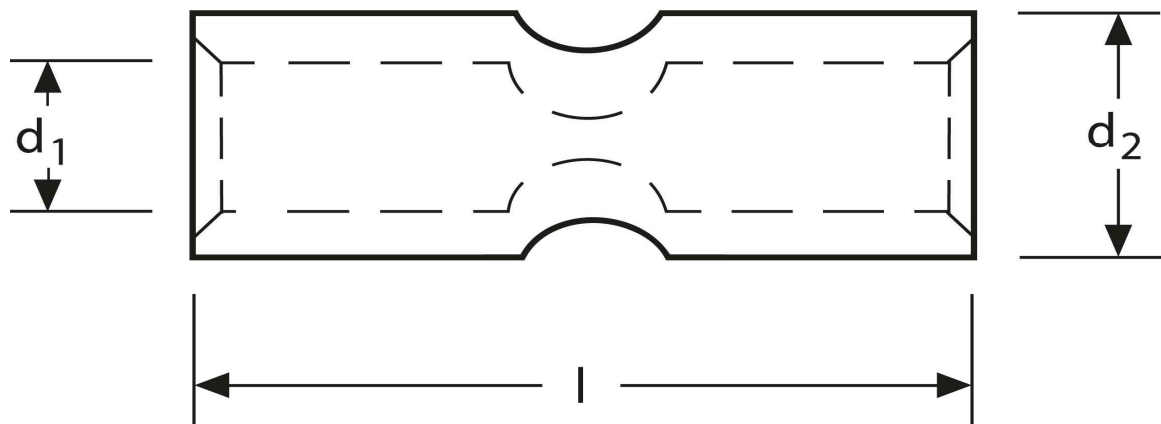


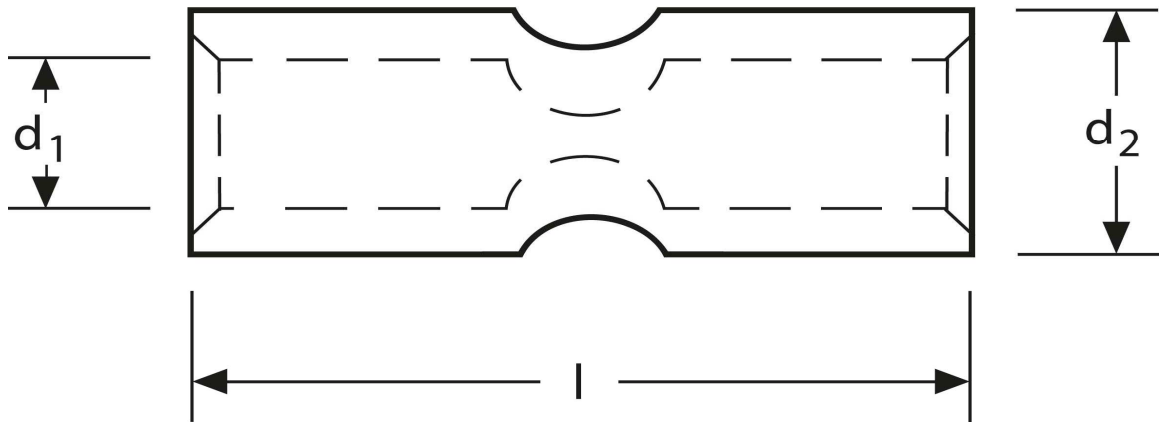
Kerbverbinder
 16 mm²



Art.Nr.	Werkstoff	Oberfläche		
KV 332016	E-CU	galv. Sn	10,0 / 1000	100
	d₁	l	d₂	s
in mm:	5,5	35	8,5	1,5

Stand: 12.08.2014

Connectors
 16 mm²



part no.	material	surface		
KV 332016	E-CU	tin-plated	10,0 / 1000	100
	d_1	l	d_2	s
in mm:	5,5	35	8,5	1,50

date: 12.08.2014