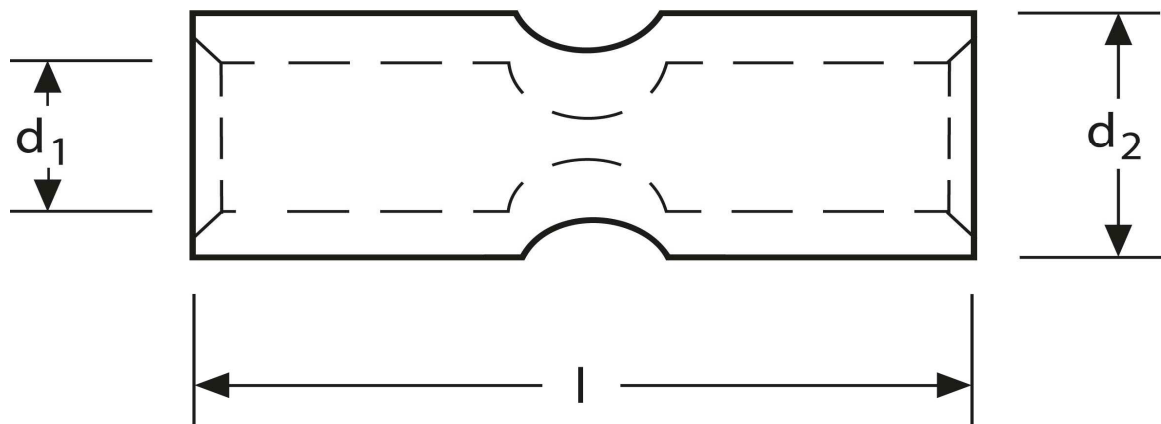


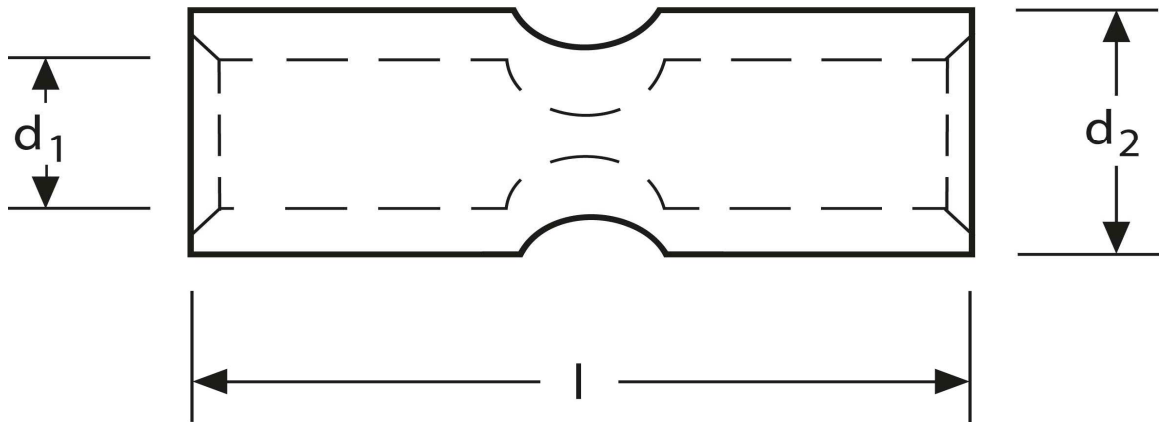
Kerbverbinder 4 mm²



Art.Nr.	Werkstoff	Oberfläche		
KV 332004	E-CU	galv. Sn	2,6 / 1000	100
	d_1	l	d_2	s
in mm:	3,0	25	5,0	1

Stand: 12.08.2014

Connectors
 4 mm²



part no.	material	surface		
KV 332004	E-CU	tin-plated	2,6 / 1000	100
	d_1	l	d_2	s
in mm:	3,0	25	5,0	1

date: 12.08.2014