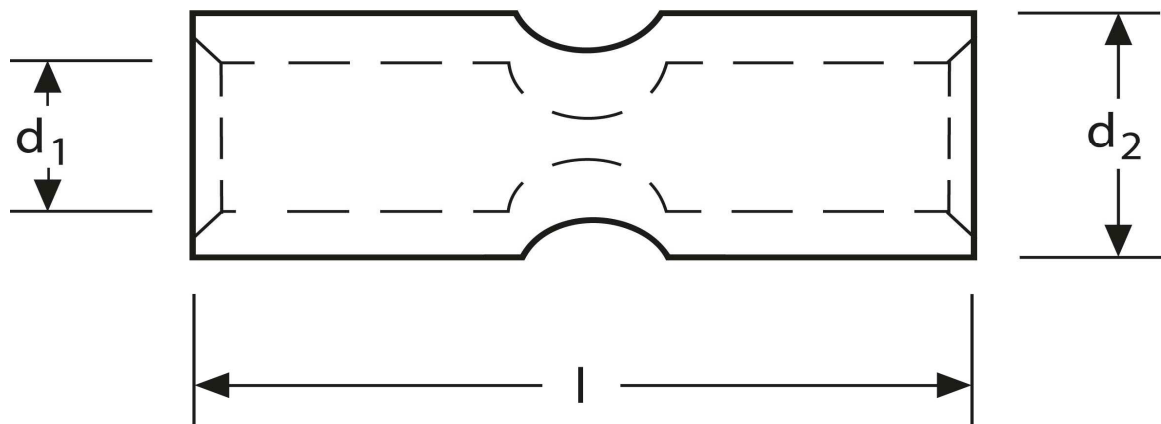


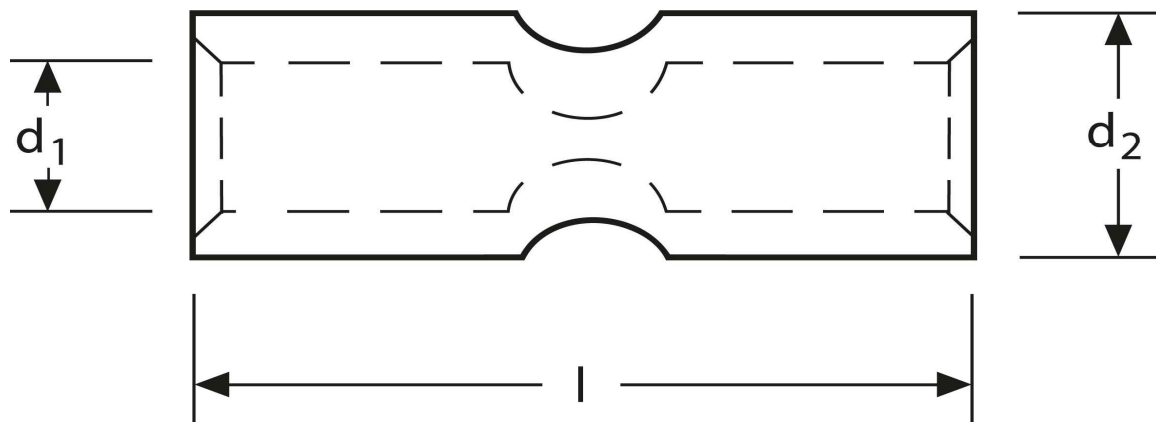
Kerbverbinder
 0,75 mm²



Art.Nr.	Werkstoff	Oberfläche		
KV 332000	E-CU	galv. Sn	0,9 / 1000	100
	d_1	l	d_2	s
in mm:	1,3	20	2,8	0,75

Stand: 12.08.2014

Connectors
 0,75 mm²



part no.	material	surface		
KV 332000	E-CU	tin-plated	0,9 / 1000	100
	d_1	l	d_2	s
in mm:	1,3	20	2,8	0,75

date: 12.08.2014