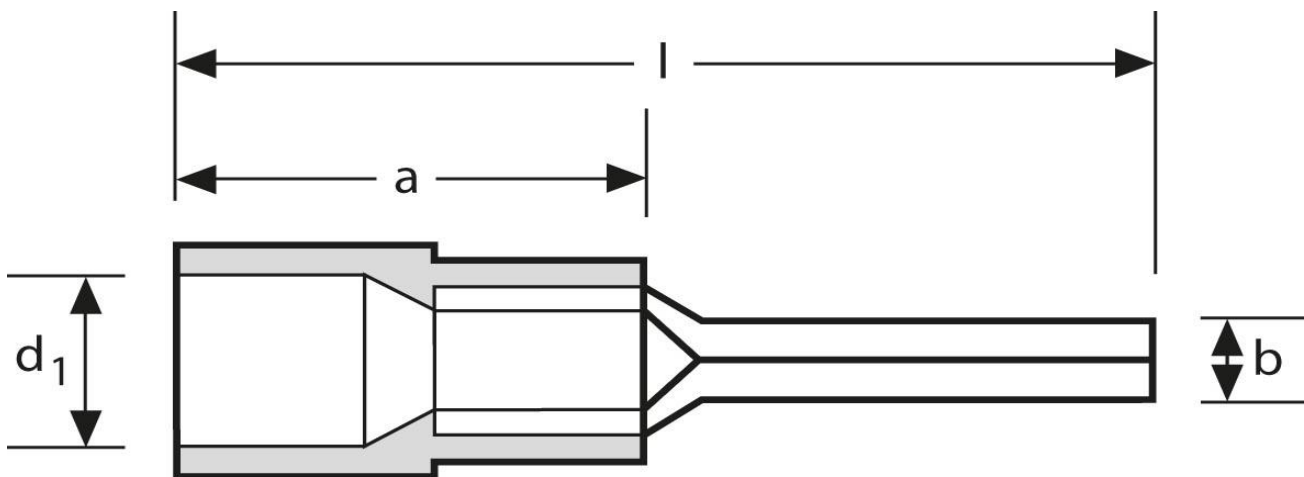




**Pin terminals**  
2,5 mm<sup>2</sup> - K



**LISTED**  
E328883

part no.	material	insulation		
K 407020N	E-Cu gal. Sn	PA 66	0,800/1000	1.000
	<b>b</b>	<b>d<sub>1</sub></b>	<b>l</b>	
<b>in mm:</b>	2,0	4,5	20,0	
	<b>a</b>	<b>s</b>		
<b>in mm:</b>	11	0,8		

date: 18.12.2020

