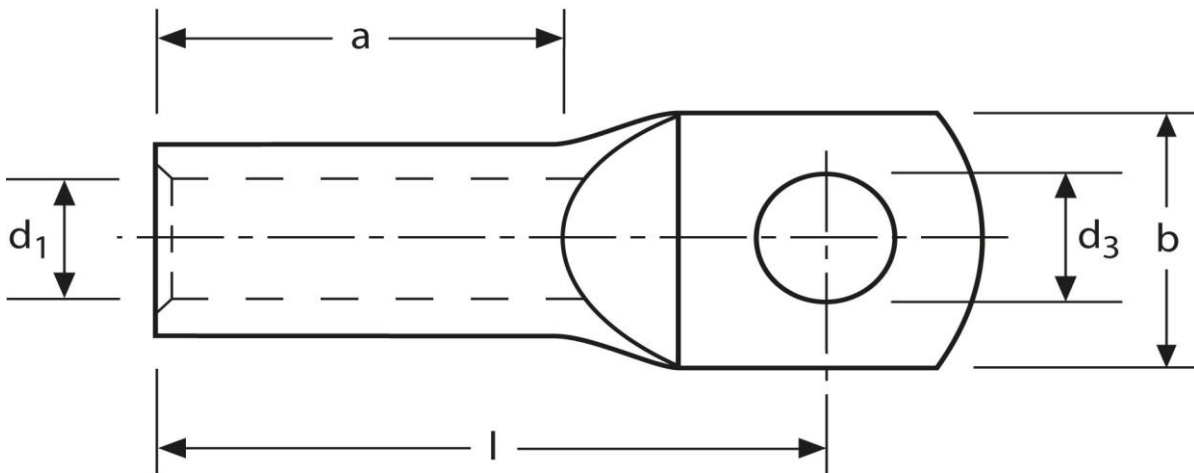


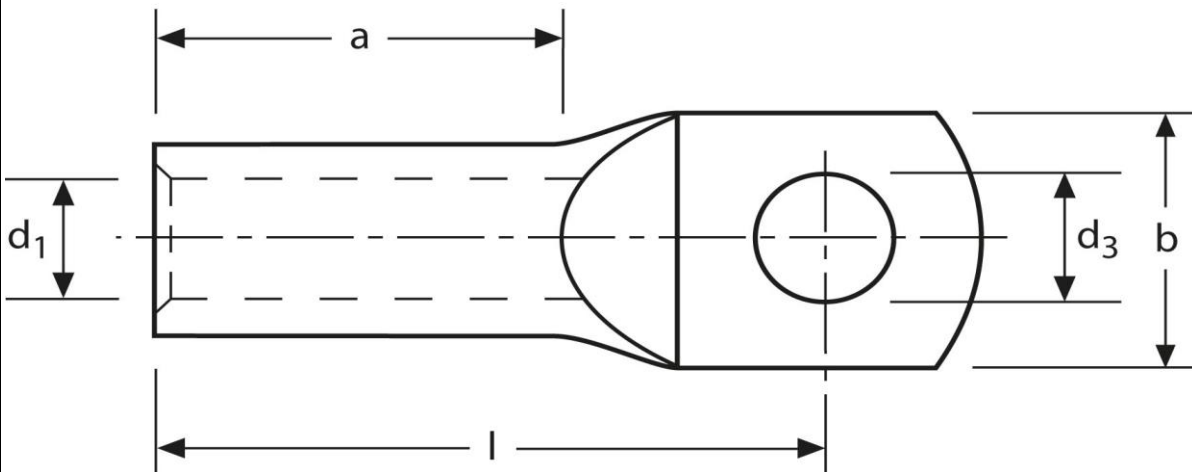
Kleinkabelschuh
 Ringform, mit Sichtloch
 6 mm² M5



Art.Nr.	Werkstoff	Oberfläche		
K379050	E-CU	galv. Sn	2,7 / 1000	100
	d₃	d₁	b	
in mm:	5,3	4,0	9,5	
	l	a		
in mm:	19	6		

Stand: 10.09.2016

Mini cable-lugs
 ring-type, with inspection hole
 6 mm² M5



part no.	material	surface		
K379050	E-CU	tin-plated	2,7 / 1000	100
	d₃	d₁	b	
in mm:	5,3	4,0	9,5	
	l	a		
in mm:	19	6		

date: 10.09.2016