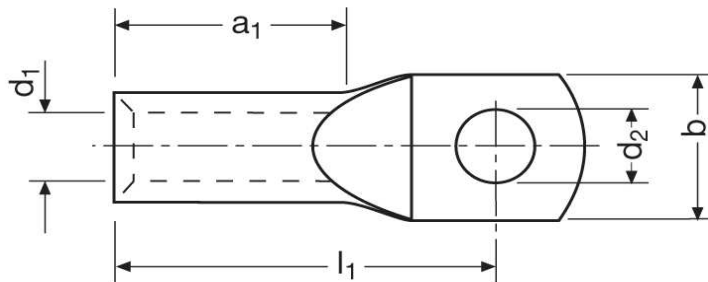


**Kleinkabelschuhe**

Ringform

2,5 mm<sup>2</sup>



Katalogseite: 2.10

Art.Nr.	Werkstoff	Oberfläche		
K377060	E-Cu	galv. Sn	1,770/1000	100
	d2	b	l1	a1
in mm:	6,5	9,5	13,0	6,0