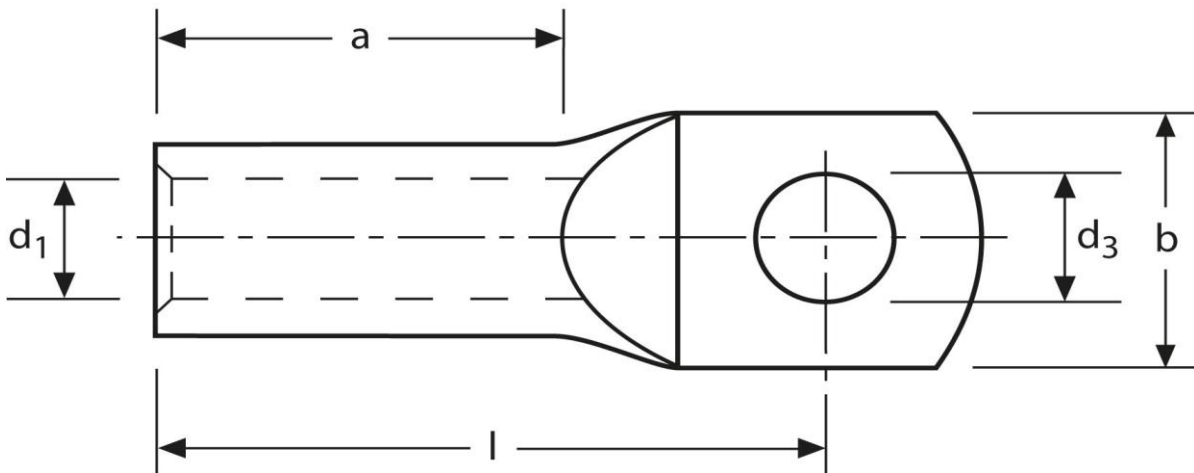


## Rohrkabelschuhe

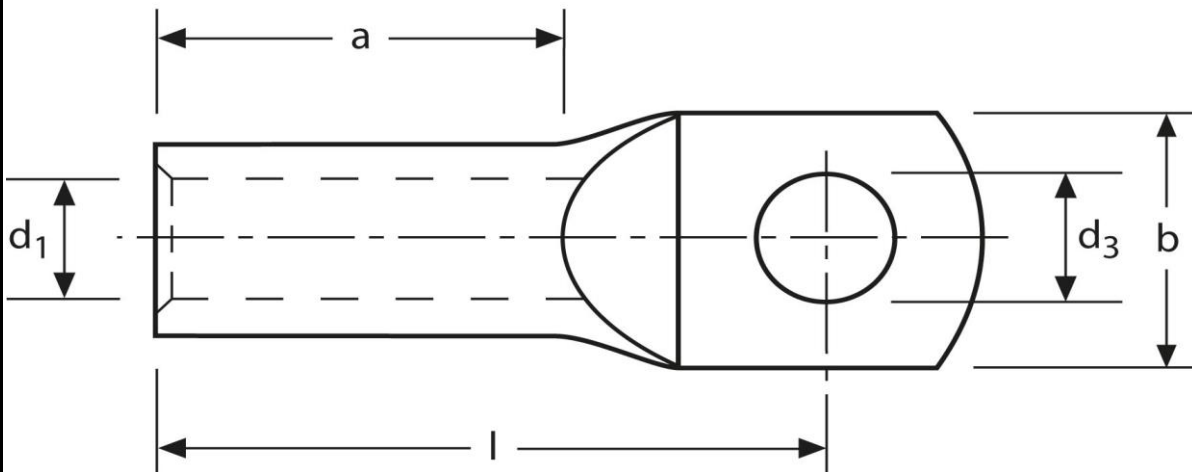
Edelstahl V4A  
1,5 - 2,5 mm<sup>2</sup> M5



Art.Nr.	Werkstoff	Typ		
K377050St4	Edelstahl	V4A	2,6 / 1000	100
	<b>d<sub>3</sub></b>	<b>d<sub>1</sub></b>	<b>b</b>	<b>l</b>
<b>in mm:</b>	5,3	3,0	9,0	21,5
	<b>a</b>	<b>Temperaturbeständigkeit</b>		
	8 mm	bis 400°C		

Stand: 08.11.2018

**Tubular cable-lugs**  
stainless steel V4A  
1,5 - 2,5 mm<sup>2</sup> M5



part no.	material	type		
K377050St4	stainl. steel	V4A	2,6 / 1000	100
	<b>d<sub>3</sub></b>	<b>d<sub>1</sub></b>	<b>b</b>	<b>l</b>
<b>in mm:</b>	5,3	3,0	9,0	21,5
	<b>a</b>	<b>temperature resistance</b>		
	8 mm	up to 400°C		

date: 08.11.2018