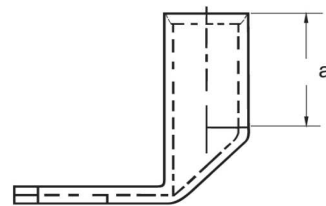
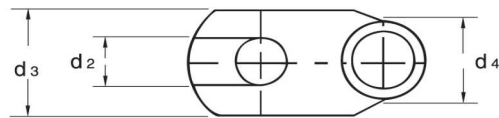
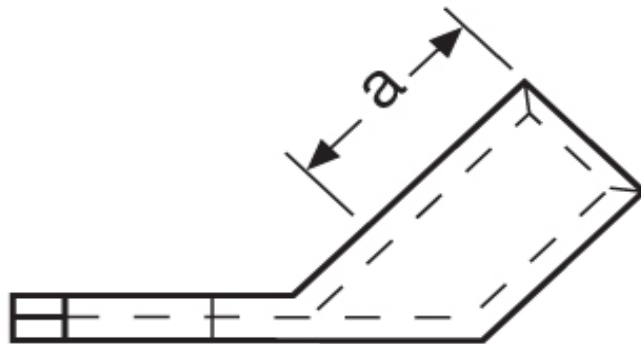


**Winkelkabelschuhe**  
35,00 mm<sup>2</sup>



Katalogseite: 2.18 - 2. 19

Art.Nr.	Werkstoff	Oberfläche			
K364121	E-CU	galv. Sn	21,50/1000	100	
	d2	d3	d4	a	Winkel
in mm:	13,0	20,0	12,0	18,0	45°