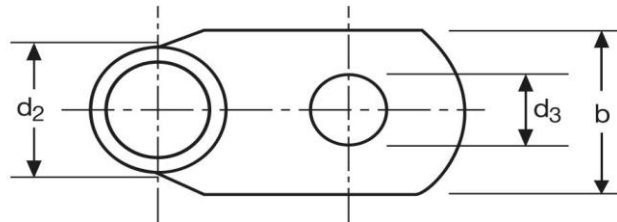
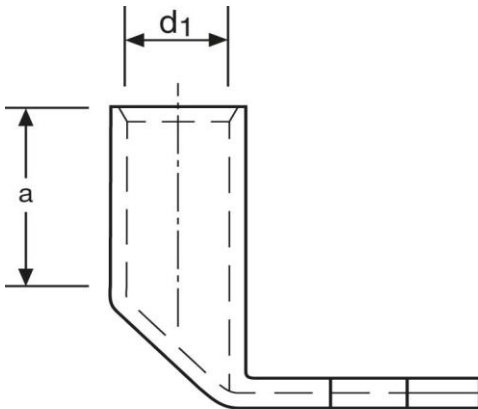


Winkelkabelschuhe

90° abgewinkelt

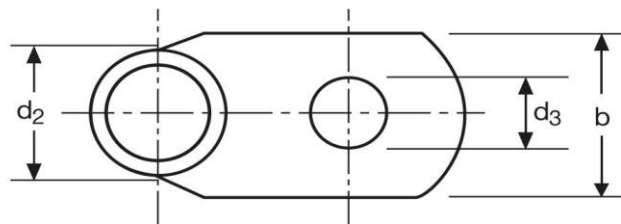
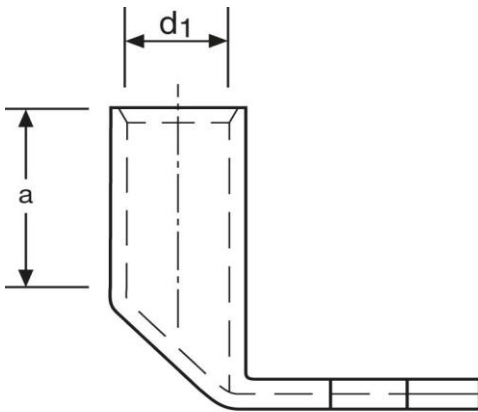
35 mm² M8



Art.Nr.	Werkstoff	Oberfläche	⚖️	📦
K364080	E-CU	galv. Sn	22,0/ 1000	25
	d ₃	b	a	
in mm:	8,5	17	17	
	d ₁	d ₂		
in mm:	8,5	12		

Stand: 12.08.2015

Angled cable-lugs
 90° angle
 35 mm² M8



part no.	material	surface		
K364080	E-CU	tin-plated	22,0/ 1000	25
	d₃	b	a	
in mm:	8,5	17	17	
	d₁	d₂		
in mm:	8,5	12		

date: 12.08.2015