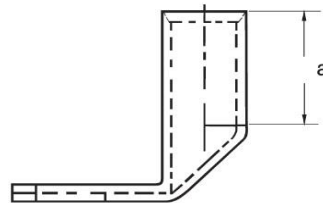
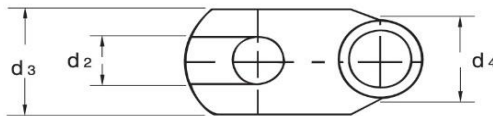
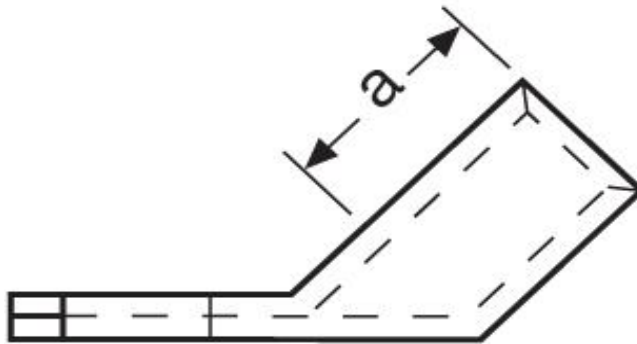
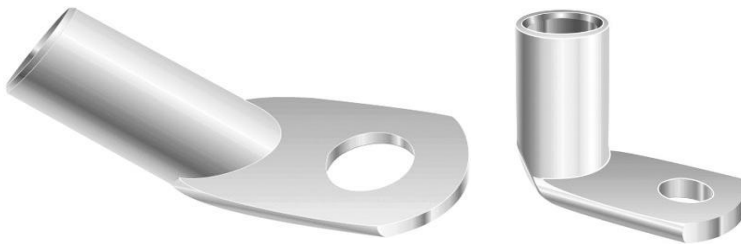
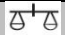



Winkelkabelschuhe

45° abgewinkelt

35 mm² M6



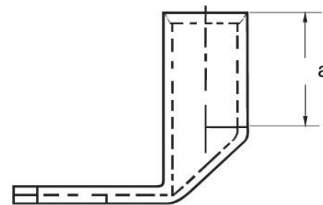
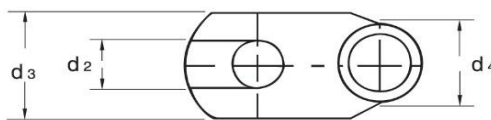
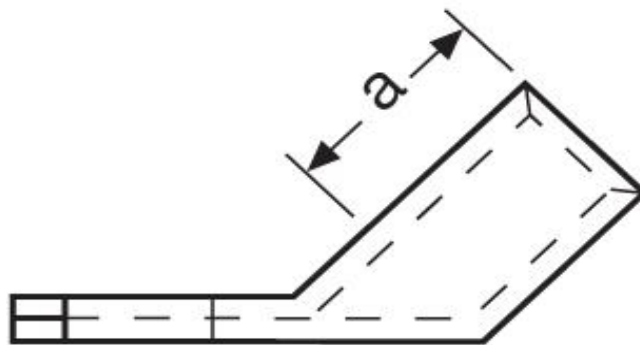
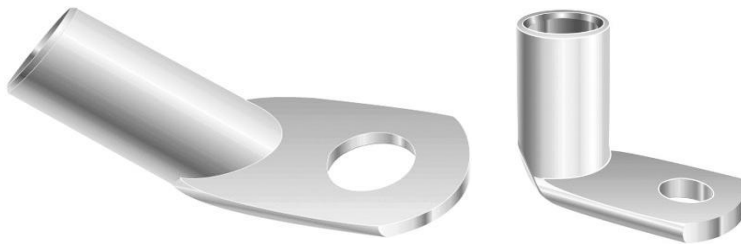
Art.Nr.	Werkstoff	Oberfläche		
K364061	E-CU	galv. Sn	20,0/ 1000	25
	d ₂	d ₃	d ₄	
in mm:	6,4	17	12	
	a			
in mm:	17,0			

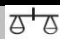

Stand: 09.04.2020

Angled cable-lugs

45° angle

35 mm² M6



part no.	material	surface		
K364061	E-CU	tin-plated	20,0/ 1000	25
	d₂	d₃	d₄	
in mm:	6,4	17,0	12,0	
	a			
in mm:	17,0			

date: 09.04.2020