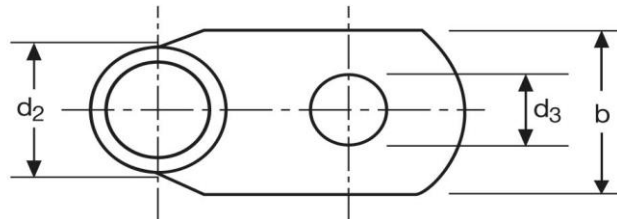
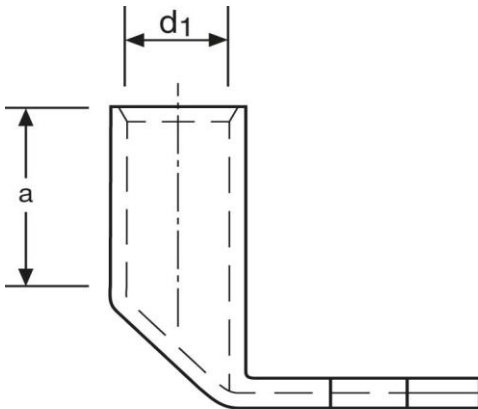


Winkelkabelschuhe

90° abgewinkelt

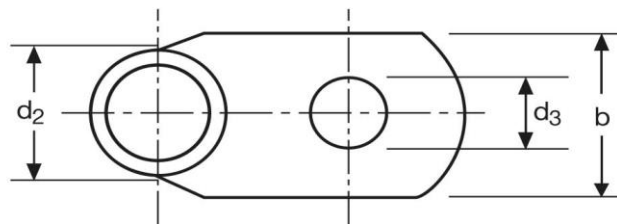
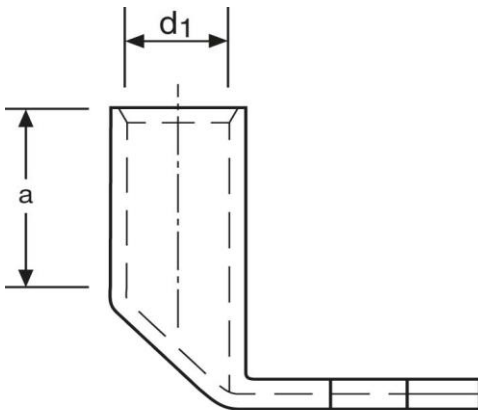
35 mm² M6



Art.Nr.	Werkstoff	Oberfläche		
K364060	E-CU	galv. Sn	20,5/ 1000	25
	d₃	b	a	
in mm:	6,5	17	17	
	d₁	d₂		
in mm:	8,5	12		

Stand: 12.08.2015

Angled cable-lugs
 90° angle
 35 mm² M6



part no.	material	surface		
K364060	E-CU	tin-plated	20,5/ 1000	25
	d₃	b	a	
in mm:	6,5	17	17	
	d₁	d₂		
in mm:	8,5	12		

date: 12.08.2015