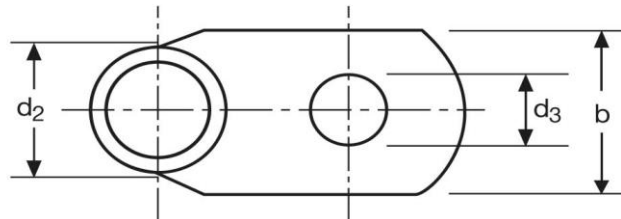
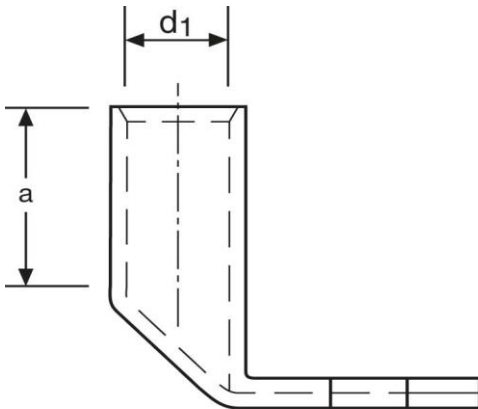


Winkelkabelschuhe

90° abgewinkelt

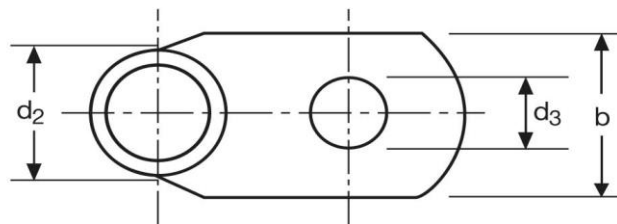
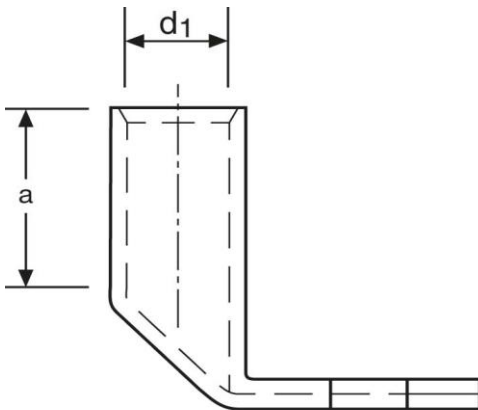
25 mm² M12



Art.Nr.	Werkstoff	Oberfläche		
K363120	E-CU	galv. Sn	14,4/ 1000	25
	d₃	b	a	
in mm:	13,0	19	15	
	d₁	d₂		
in mm:	7,0	10,0		

Stand: 06.03.2017

Angled cable-lugs
 90° angle
 25 mm² M12



part no.	material	surface		
K363120	E-CU	tin-plated	14,4/ 1000	25
	d₃	b	a	
in mm:	13,0	19	15	
	d₁	d₂		
in mm:	7,0	10,0		

date: 06.03.2017