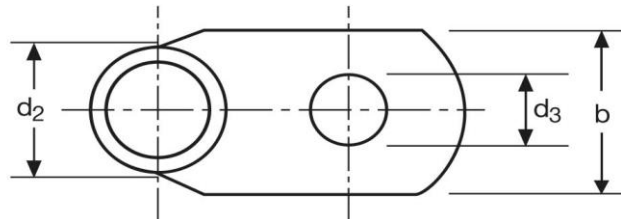
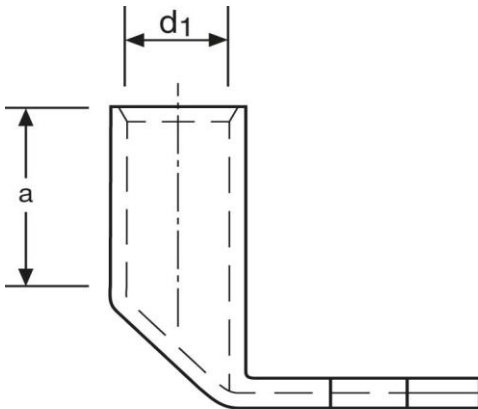


Winkelkabelschuhe

90° abgewinkelt

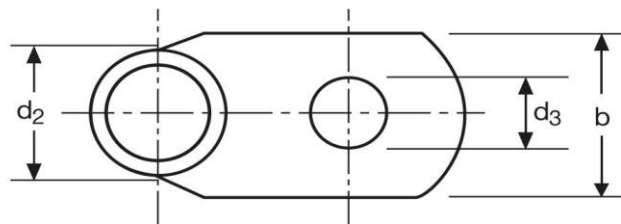
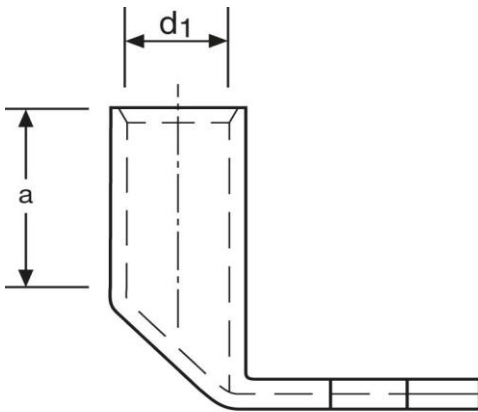
25 mm² M10



Art.Nr.	Werkstoff	Oberfläche		
K363100	E-CU	galv. Sn	14,9/ 1000	25
	d ₃	b	a	
in mm:	10,5	18	15	
	d ₁	d ₂		
in mm:	7	10		

Stand: 12.08.2015

Angled cable-lugs
 90° angle
 25 mm² M10



part no.	material	surface		
K363100	E-CU	tin-plated	14,9/ 1000	25
	d₃	b	a	
in mm:	10,5	18	15	
	d₁	d₂		
in mm:	7	10		

date: 12.08.2015