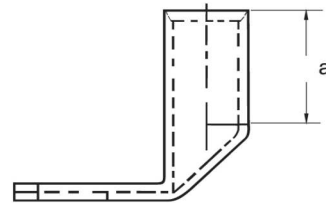
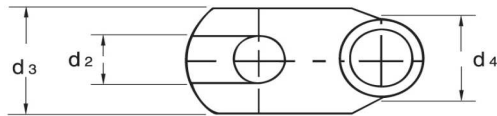
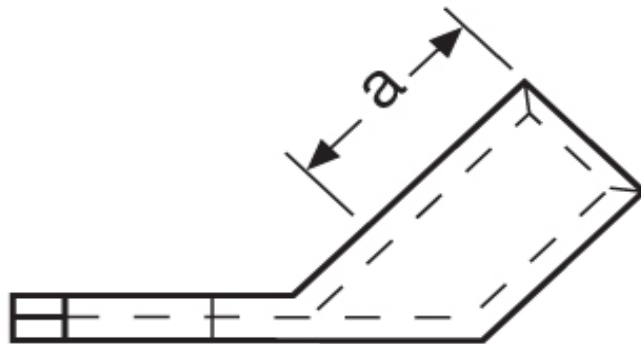


**Winkelkabelschuhe**  
25,00 mm<sup>2</sup>



Katalogseite: 2.18 - 2. 19

Art.Nr.	Werkstoff	Oberfläche			
K363081	E-CU	galv. Sn	13,00/1000	100	
	d2	d3	d4	a	Winkel
in mm:	8,4	15,0	10,0	16,0	45°