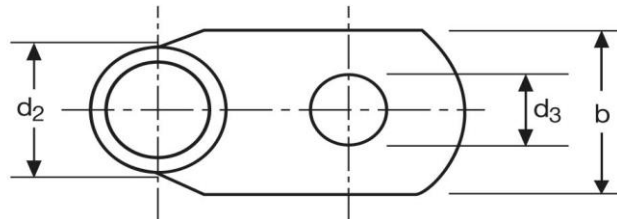
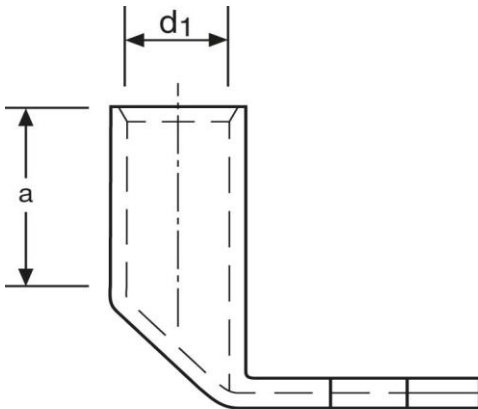


Winkelkabelschuhe

90° abgewinkelt

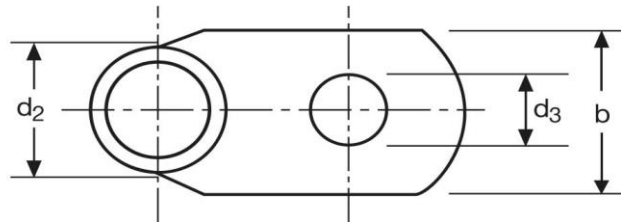
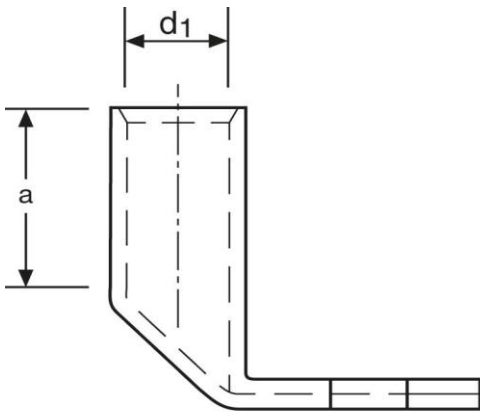
25 mm² M6

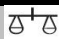



Art.Nr.	Werkstoff	Oberfläche		
K363060	E-CU	galv. Sn	13,2/ 1000	25
	d₃	b	a	
in mm:	6,5	14	15	
	d₁	d₂		
in mm:	7,0	10,0		

Stand: 18.06.2018

Angled cable-lugs
90° angle
25 mm² M6



part no.	material	surface		
K363060	E-CU	tin-plated	13,2/ 1000	25
	d₃	b	a	
in mm:	6,5	14	15	
	d₁	d₂		
in mm:	7,0	10,0		

date: 18.06.2018