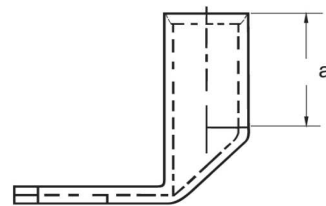
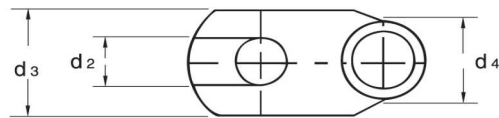
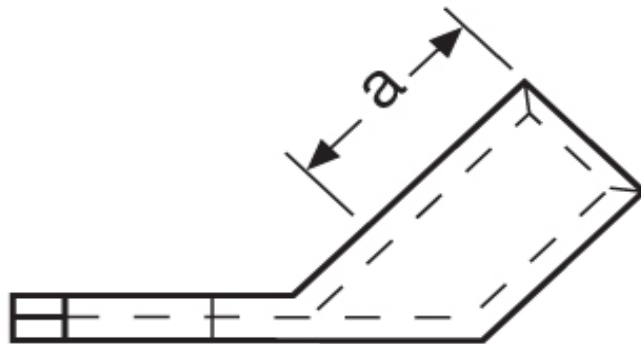


Winkelkabelschuhe
16,00 mm²



Katalogseite: 2.18 - 2. 19

Art.Nr.	Werkstoff	Oberfläche			
K362121	E-CU	galv. Sn	11,00/1000	100	
	d2	d3	d4	a	Winkel
in mm:	13,0	20,0	8,5	15,0	45°