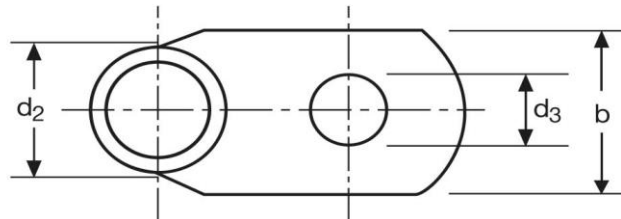
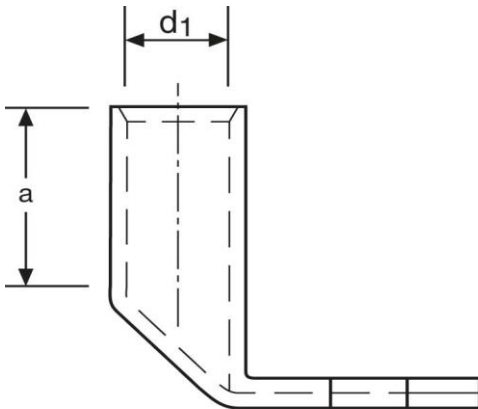


Winkelkabelschuhe

90° abgewinkelt

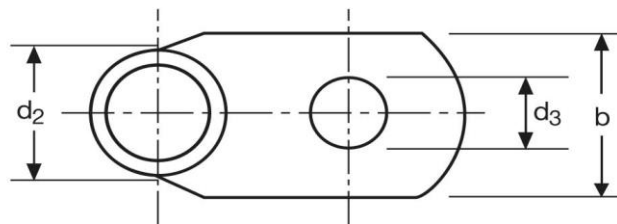
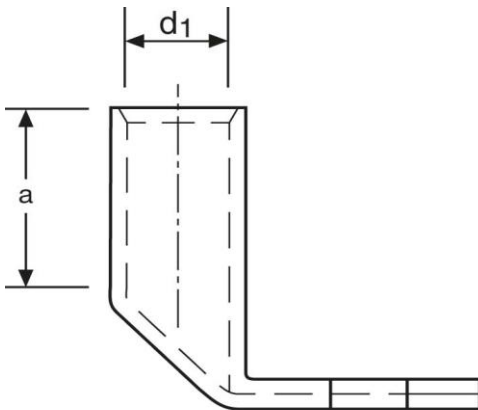
16 mm² M12



Art.Nr.	Werkstoff	Oberfläche		
K362120	E-CU	galv. Sn	11,5/ 1000	50
	d₃	b	a	
in mm:	13,0	19	13	
	d₁	d₂		
in mm:	5,5	8,5		

Stand: 18.06.2018

Angled cable-lugs
 90° angle
 16 mm² M12



part no.	material	surface		
K362120	E-CU	tin-plated	11,5/ 1000	50
	d₃	b	a	
in mm:	13,0	19	13	
	d₁	d₂		
in mm:	5,5	8,5		

date: 18.06.2018