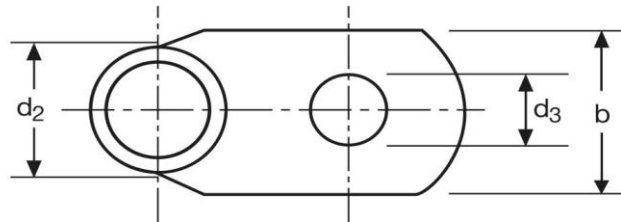
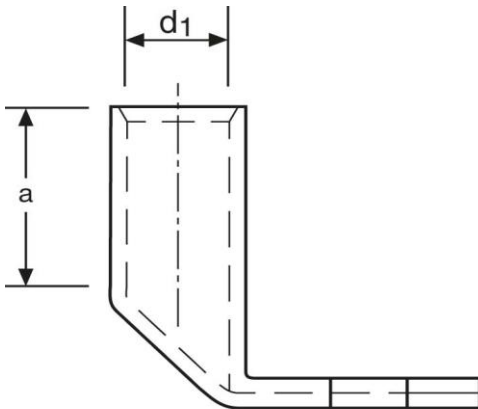


## Winkelkabelschuhe

90° abgewinkelt

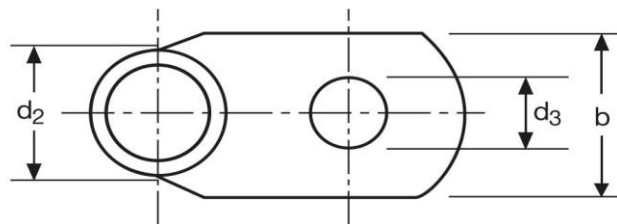
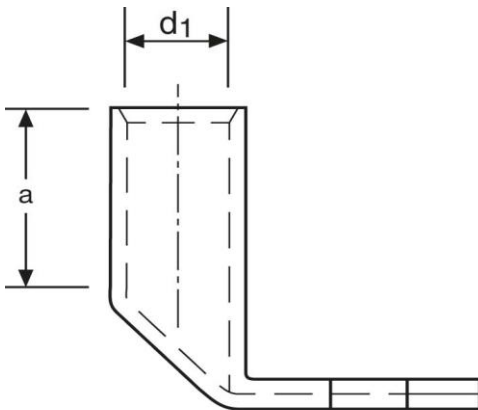
16 mm<sup>2</sup> M10



Art.Nr.	Werkstoff	Oberfläche		
K362100	E-CU	galv. Sn	10,9/ 1000	50
	d <sub>3</sub>	b	a	
in mm:	10,5	17	13	
	d <sub>1</sub>	d <sub>2</sub>		
in mm:	5,5	8,5		

Stand: 18.06.2018

**Angled cable-lugs**  
90° angle  
16 mm<sup>2</sup> M10



part no.	material	surface		
K362100	E-CU	tin-plated	10,9/ 1000	50
	<b>d<sub>3</sub></b>	<b>b</b>	<b>a</b>	
<b>in mm:</b>	10,5	17	13	
	<b>d<sub>1</sub></b>	<b>d<sub>2</sub></b>		
<b>in mm:</b>	5,5	8,5		

date: 18.06.2018