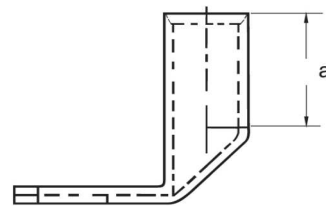
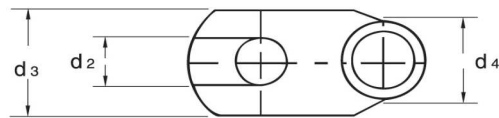
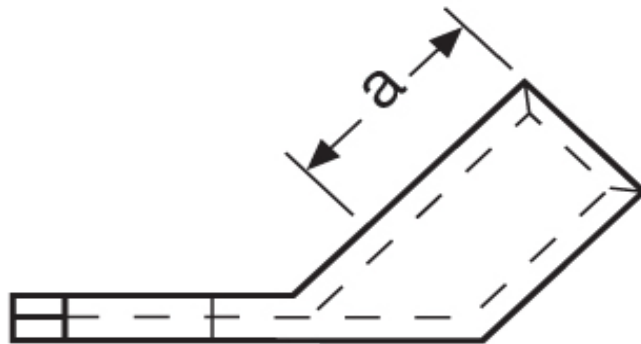


**Winkelkabelschuhe**

16,00 mm<sup>2</sup>



Katalogseite: 2.18 - 2. 19

Art.Nr.	Werkstoff	Oberfläche			
K362081	E-CU	galv. Sn	10,50/1000	100	
	d2	d3	d4	a	Winkel
in mm:	8,4	15,0	8,5	15,0	45°