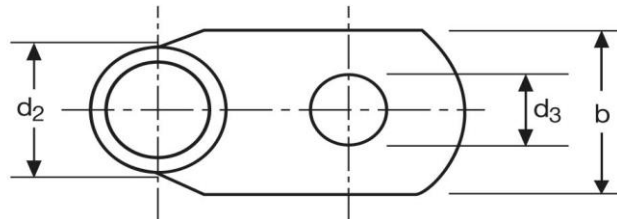
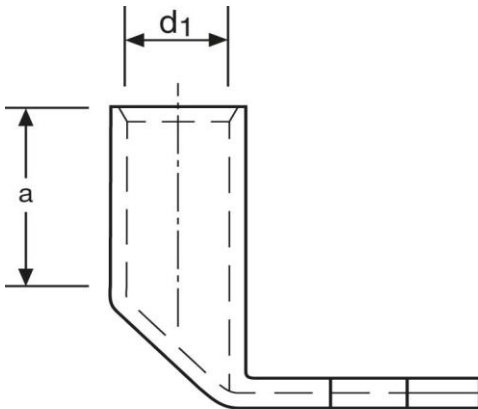


Winkelkabelschuhe

90° abgewinkelt

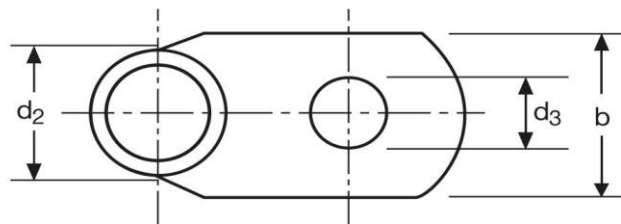
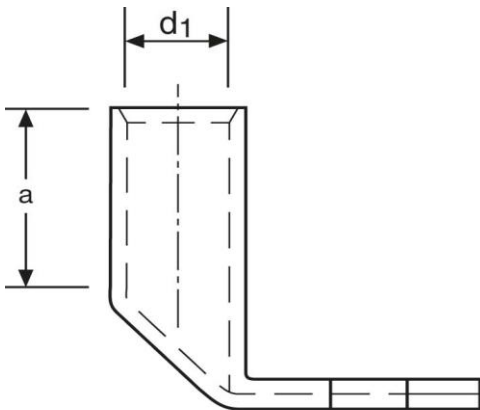
16 mm² M8

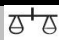



Art.Nr.	Werkstoff	Oberfläche		
K362080	E-CU	galv. Sn	10,8/ 1000	50
	d₃	b	a	
in mm:	8,5	15	13	
	d₁	d₂		
in mm:	5,5	8,5		

Stand: 06.03.2017

Angled cable-lugs
 90° angle
 16 mm² M8



part no.	material	surface		
K362080	E-CU	tin-plated	10,8/ 1000	50
	d₃	b	a	
in mm:	8,5	15	13	
	d₁	d₂		
in mm:	5,5	8,5		

date: 06.03.2017