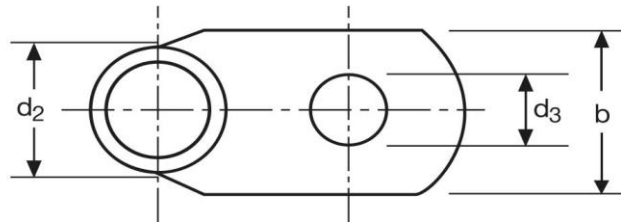
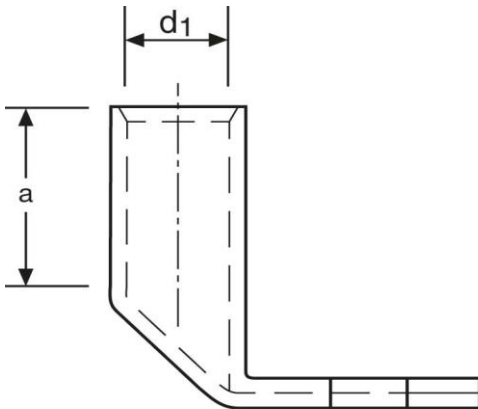


Winkelkabelschuhe

90° abgewinkelt

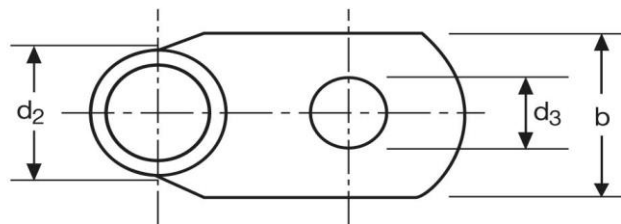
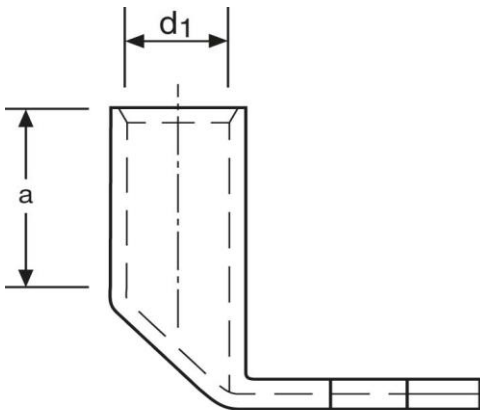
16 mm² M6



Art.Nr.	Werkstoff	Oberfläche		
K362060	E-CU	galv. Sn	10,1/ 1000	50
	d₃	b	a	
in mm:	6,5	12	13	
	d₁	d₂		
in mm:	5,5	8,5		

Stand: 18.06.2018

Angled cable-lugs
90° angle
16 mm² M6



part no.	material	surface		
K362060	E-CU	tin-plated	10,1/ 1000	50
	d₃	b	a	
in mm:	6,5	12	13	
	d₁	d₂		
in mm:	5,5	8,5		

date: 18.06.2018