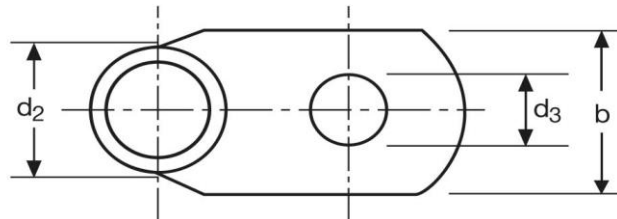
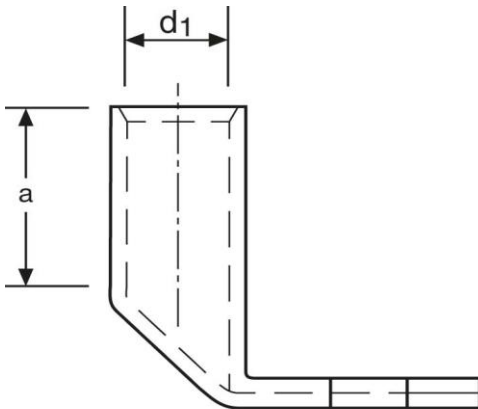


## Winkelkabelschuhe

90° abgewinkelt

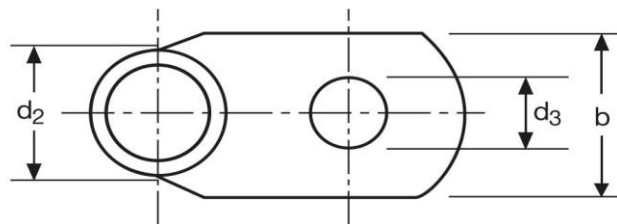
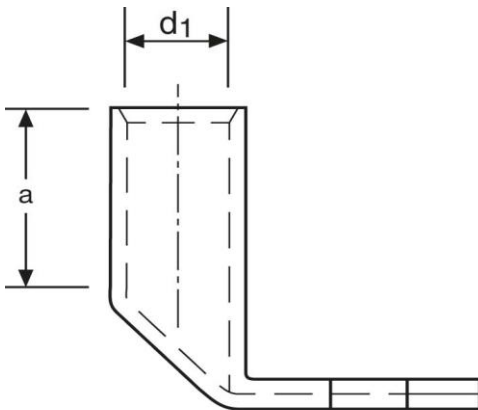
10 mm<sup>2</sup> M10



Art.Nr.	Werkstoff	Oberfläche		
K361100	E-CU	galv. Sn	6,6/ 1000	50
	<b>d<sub>3</sub></b>	<b>b</b>	<b>a</b>	
<b>in mm:</b>	10,5	17	10	
	<b>d<sub>1</sub></b>	<b>d<sub>2</sub></b>		
<b>in mm:</b>	4,5	7,0		

Stand: 18.06.2018

**Angled cable-lugs**  
 90° angle  
 10 mm<sup>2</sup> M10



part no.	material	surface		
K361100	E-CU	tin-plated	6,6/ 1000	50
	<b>d<sub>3</sub></b>	<b>b</b>	<b>a</b>	
<b>in mm:</b>	10,5	17	10	
	<b>d<sub>1</sub></b>	<b>d<sub>2</sub></b>		
<b>in mm:</b>	4,5	7,0		

date: 18.06.2018