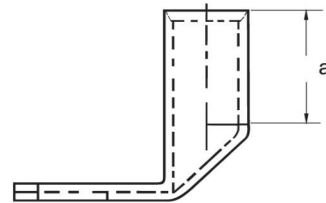
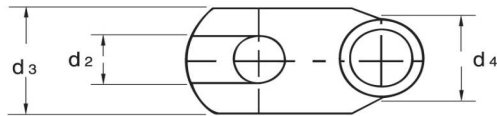
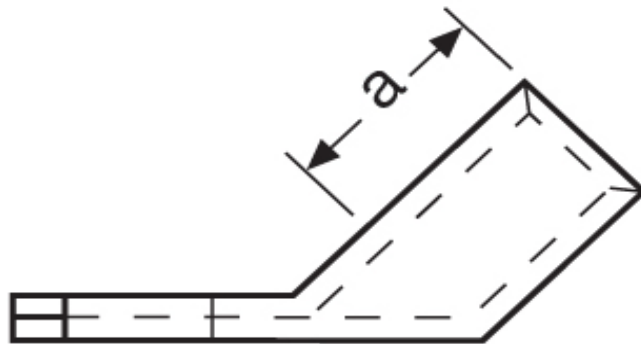


Winkelkabelschuhe
10,00 mm²



Katalogseite: 2.18 - 2. 19

Art.Nr.	Werkstoff	Oberfläche			
K361081	E-CU	galv. Sn	7,50/1000	100	
	d2	d3	d4	a	Winkel
in mm:	8,4	15,0	7,0	11,0	45°