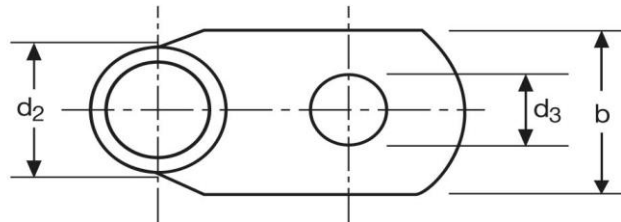
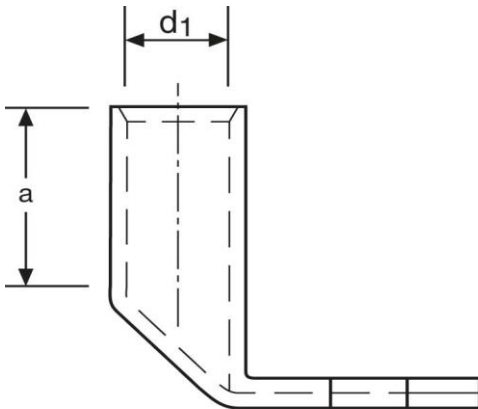


Winkelkabelschuhe

90° abgewinkelt

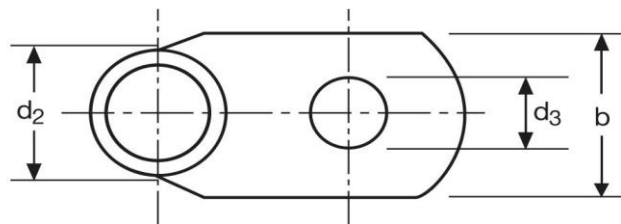
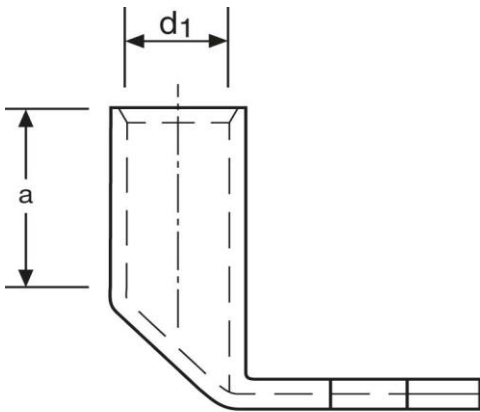
10 mm² M8



Art.Nr.	Werkstoff	Oberfläche		
K361080	E-CU	galv. Sn	6,3/ 1000	50
	d₃	b	a	
in mm:	8,5	15	10	
	d₁	d₂		
in mm:	4,5	7,0		

Stand: 06.03.2017

Angled cable-lugs
 90° angle
 10 mm² M8



part no.	material	surface		
K361080	E-CU	tin-plated	6,3/ 1000	50
	d₃	b	a	
in mm:	8,5	15	10	
	d₁	d₂		
in mm:	4,5	7,0		

date: 06.03.2017