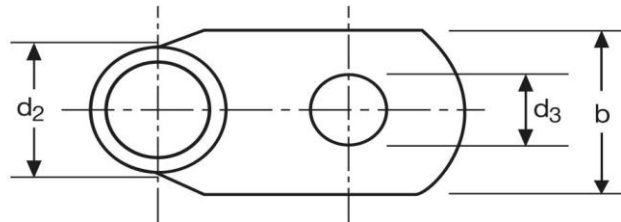
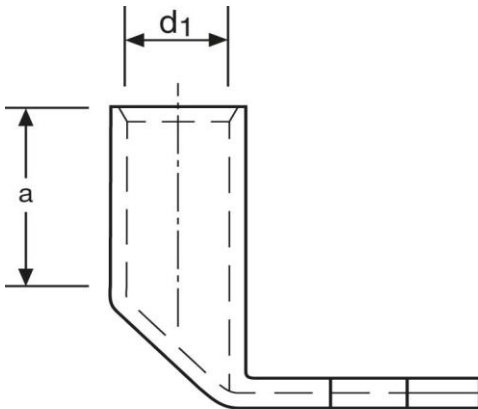


Winkelkabelschuhe

90° abgewinkelt

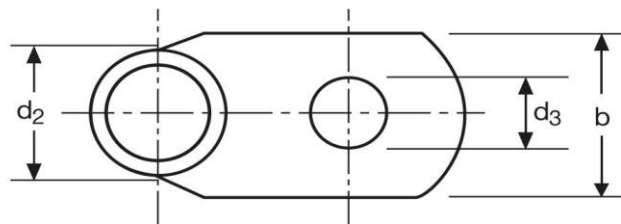
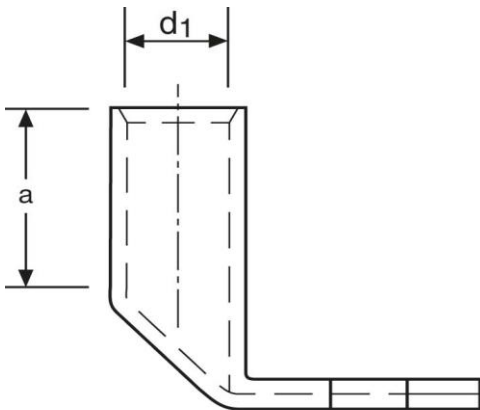
6 mm² M8

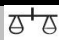



Art.Nr.	Werkstoff	Oberfläche		
K360080	E-CU	galv. Sn	6,1/ 1000	50
	d ₃	b	a	
in mm:	8,5	14	9	
	d ₁	d ₂		
in mm:	3,5	6,5		

Stand: 18.06.2018

Angled cable-lugs
90° angle
6 mm² M8



part no.	material	surface		
K360080	E-CU	tin-plated	6,1/ 1000	50
	d₃	b	a	
in mm:	8,5	14	9	
	d₁	d₂		
in mm:	3,5	6,5		

date: 18.06.2018