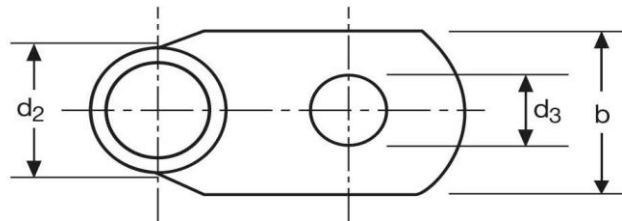
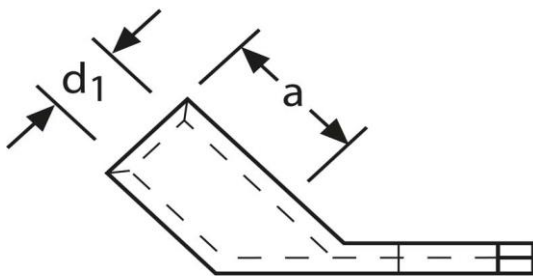


Winkelkabelschuhe

45° abgewinkelt

6 mm² M5



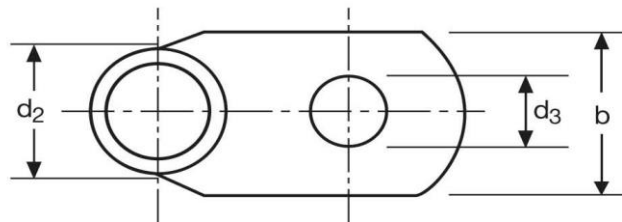
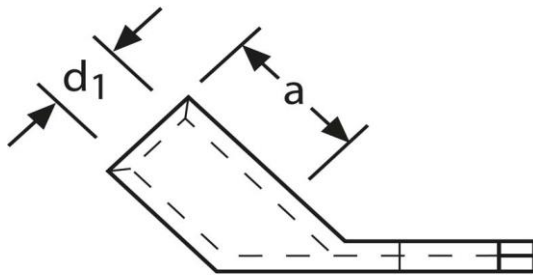
Art.Nr.	Werkstoff	Oberfläche		
K360051	E-CU	galv. Sn	6,0/ 1000	50
	d₃	b	a	
in mm:	5,5	10	9	
	d₁	d₂		
in mm:	3,5	6,5		

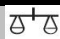

Stand: 23.08.2016

Angled cable-lugs

45° angle

6 mm² M5



part no.	material	surface		
K360051	E-CU	tin-plated	6,0/ 1000	50
	d₃	b	a	
in mm:	5,5	10	9	
	d₁	d₂		
in mm:	3,5	6,5		

date: 23.08.2016