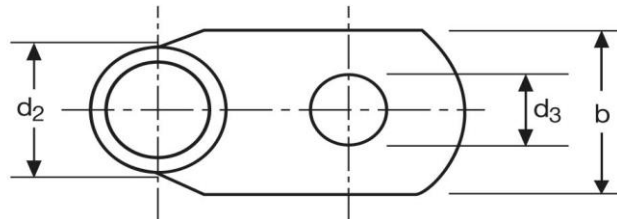
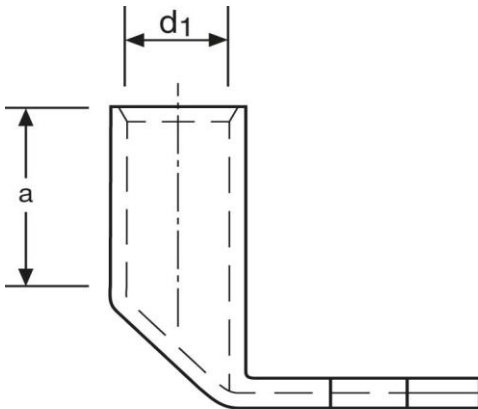


Winkelkabelschuhe

90° abgewinkelt

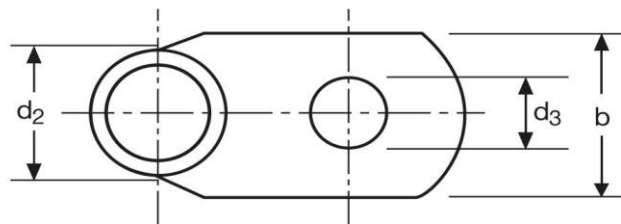
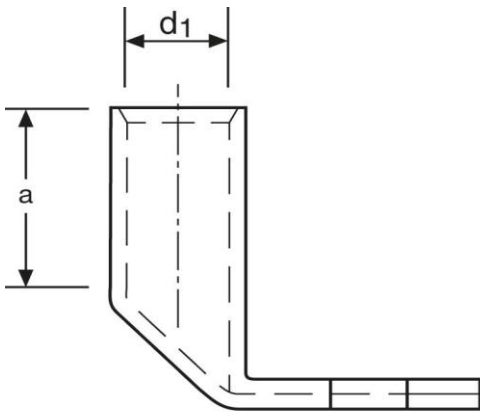
6 mm² M5

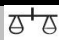



Art.Nr.	Werkstoff	Oberfläche		
K360050	E-CU	galv. Sn	5,9/ 1000	50
	d ₃	b	a	
in mm:	5,5	10	9	
	d ₁	d ₂		
in mm:	3,5	6,5		

Stand: 23.08.2016

Angled cable-lugs
90° angle
6 mm² M5



part no.	material	surface		
K360050	E-CU	tin-plated	5,9/ 1000	50
	d₃	b	a	
in mm:	5,5	10	9	
	d₁	d₂		
in mm:	3,5	6,5		

date: 23.08.2016