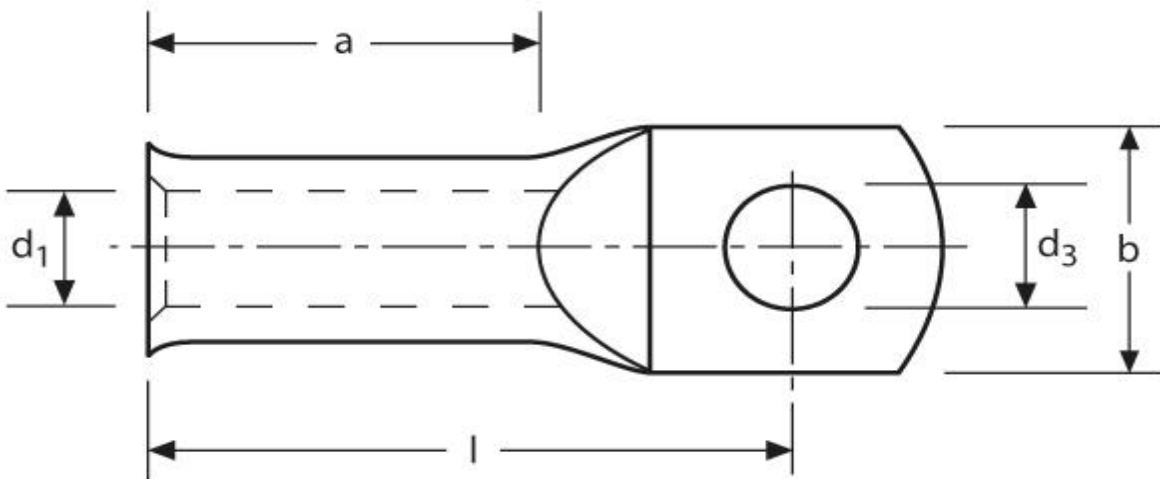
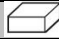


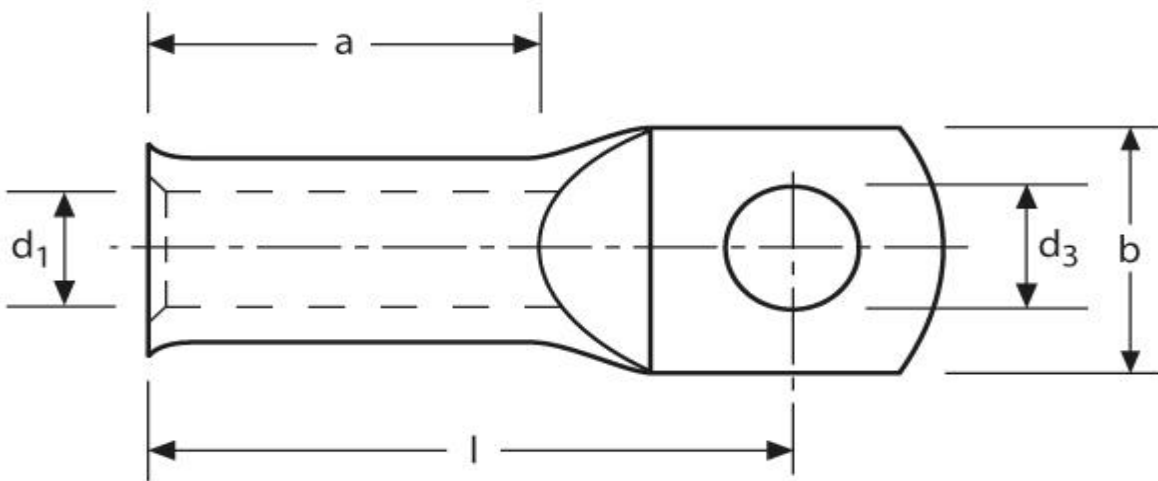
Rohrkabelschuhe
für feindrähtige Leiter
16 mm² M4




Art.Nr.	Werkstoff	Oberfläche	
K352040	Cu	galv. Sn	50
	d ₃	b	l
in mm:	4,3	13	30
	a	d ₁	
in mm:	15	6,6	

Stand: 07.12.2016

Tubular cable-lugs
 for fine stranded conductors
 16 mm² M4



part no.	material	surface	
K352040	Cu	tin-plated	50

	d ₃	d ₁	b
in mm:	4,3	13	30

	l	a
in mm:	15	6,6

date: 07.12.2016