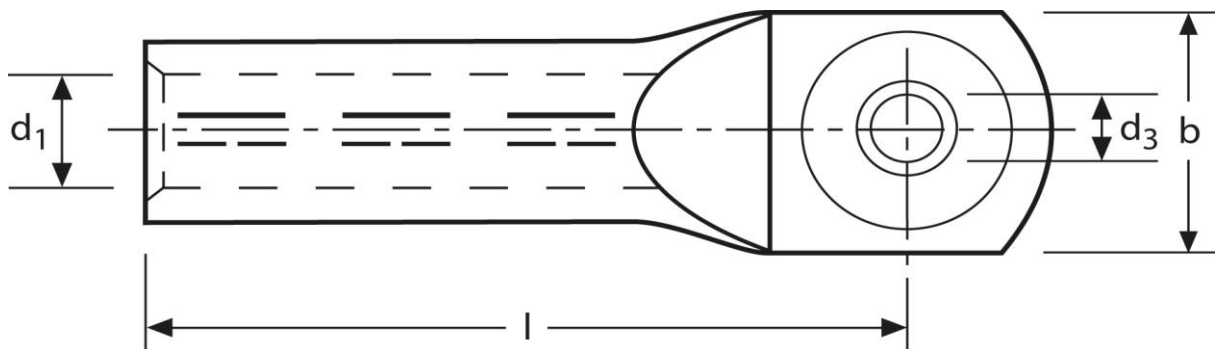


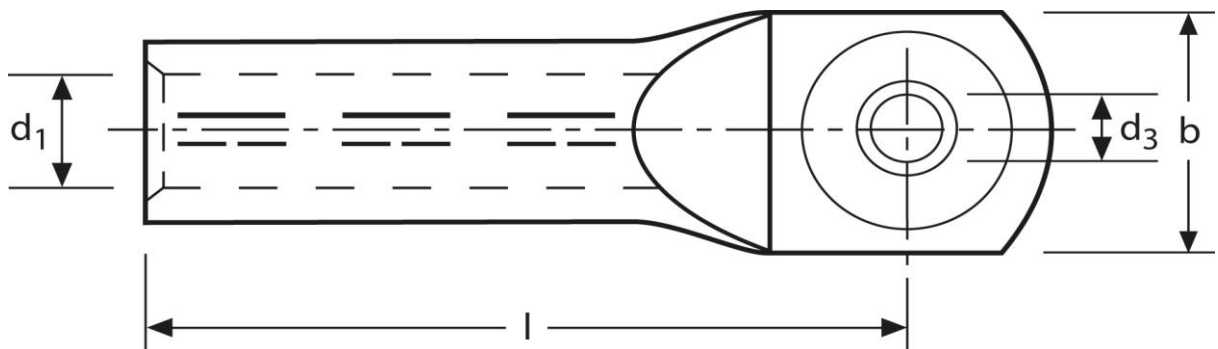
AL - CU - Presskabelschuhe
 rm/sm 185 mm² - se 240 mm², M12



Art.Nr.	Werkstoff	Oberfläche	Kennziffer		
K3501012	AL, E-CU	blank	28	150 /1000	5
	d₃	b	l	d₁	
in mm:	13,0	40	106	18,3	

Stand: 25.07.2017

AL - CU - Compression cable-lugs
 rm/sm 185 mm² - se 240 mm², M12



part no.	material	surface	code		
K3501012	AL, E-CU	bare	28	150 /1000	5
in mm:	d₃	b	l	d₁	
	13,0	40	106	18,3	

date: 25.07.2017