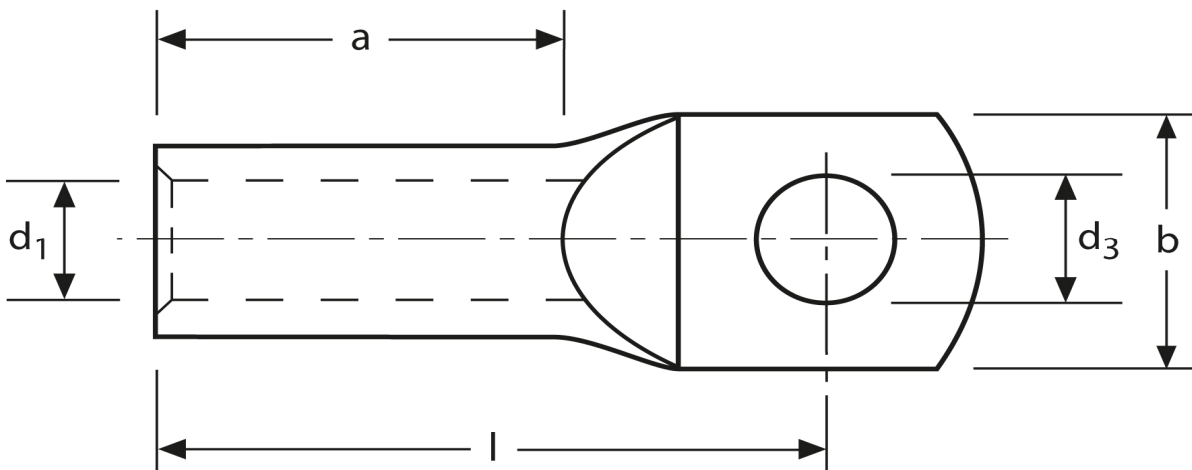
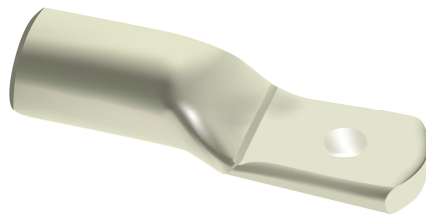




Rohrkabelschuhe
für Schaltgeräteanschlüsse
50 mm² M10



Art.Nr.	Werkstoff	Oberfläche		
K 340100SG	E-CU	galv. Sn	30,8/1000	25
	d ₃	d ₁	b	
in mm:	10,5	10	19	
	l	a		
in mm:	39	19		

Stand: 23.05.2013