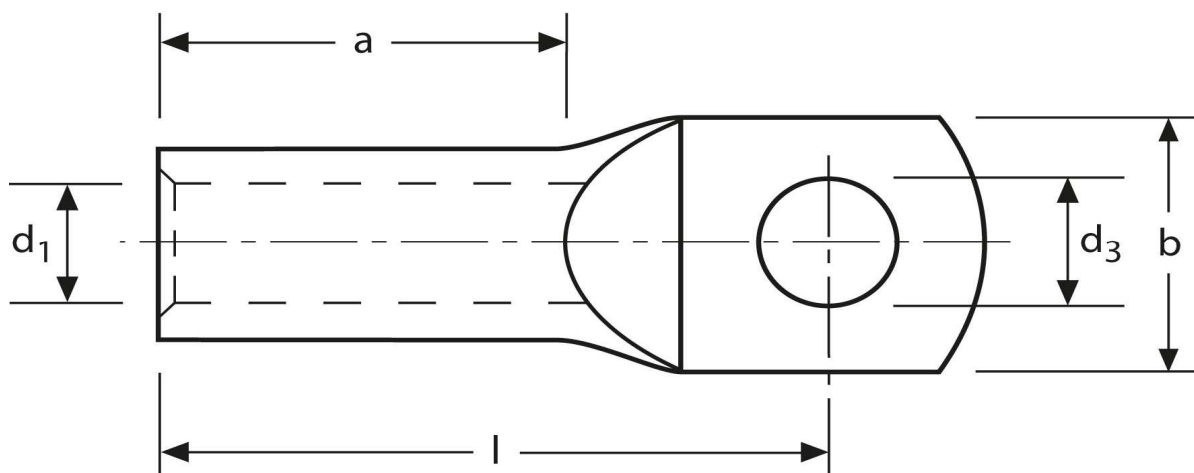
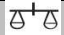



Rohrkabelschuhe

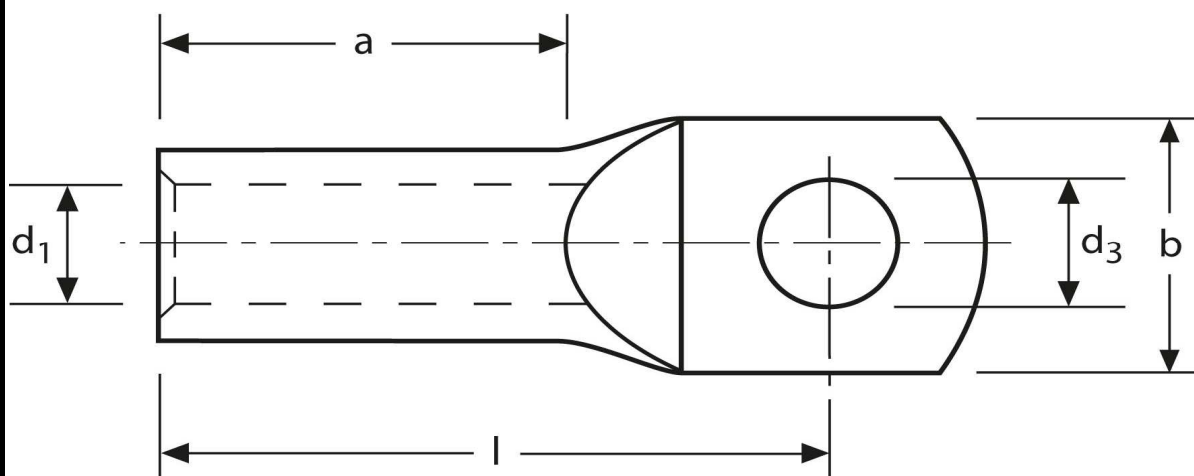
handelsüblich
10 mm² M12

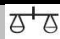



Art.Nr.	Werkstoff	Oberfläche		
K336120	E-CU	galv. Sn	6,4/ 1000	100
	d ₃	d ₁	b	
in mm:	13,0	4,5	19,0	
	l	a		
in mm:	26,7	10		

Stand: 09.10.2014

Tubular cable-lugs
commercial
10 mm² M12



part no.	material	surface		
K336120	E-CU	tin-plated	6,4/ 1000	100
	d ₃	d ₁	b	
in mm:	13,0	4,5	19,0	
	l	a		
in mm:	26,7	10		

date: 09.10.2014