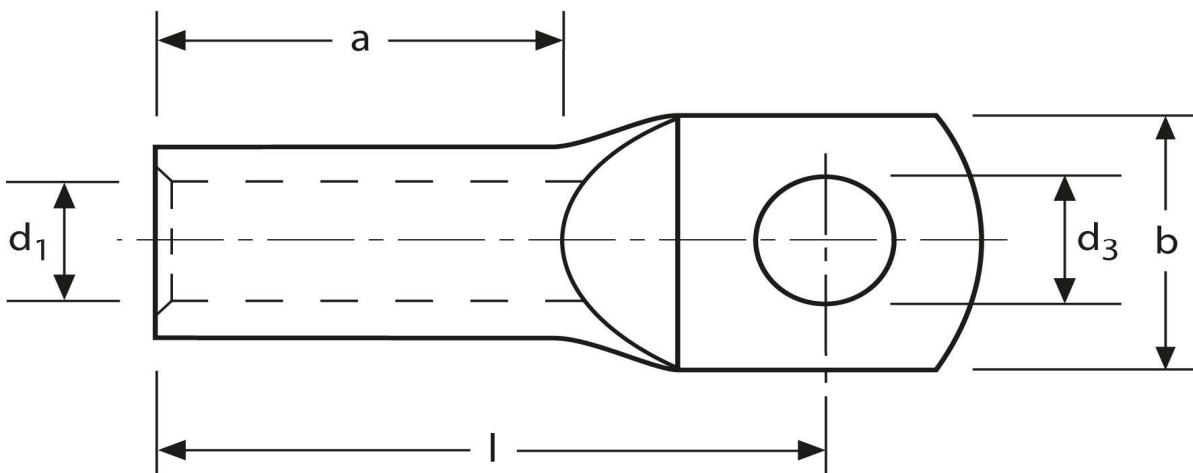


Rohrkabelschuhe

handelsüblich

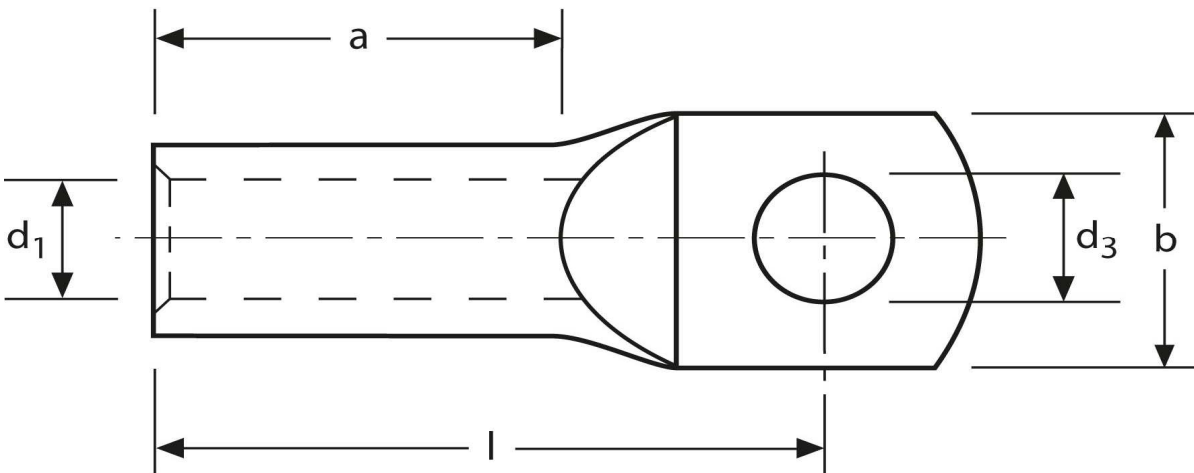
10 mm² M5



Art.Nr.	Werkstoff	Oberfläche		
K336050	E-CU	galv. Sn	5,3 / 1000	100
	d₃	d₁	b	
in mm:	5,5	4,5	12,0	
	l	a		
in mm:	22	10		

Stand: 09.10.2014

Tubular cable-lugs
 commercial
 10 mm² M5



part no.	material	surface		
K336050	E-CU	tin-plated	5,3 / 1000	100
	d₃	d₁	b	
in mm:	5,5	4,5	12,0	
	l	a		
in mm:	22	10		

date: 09.10.2014