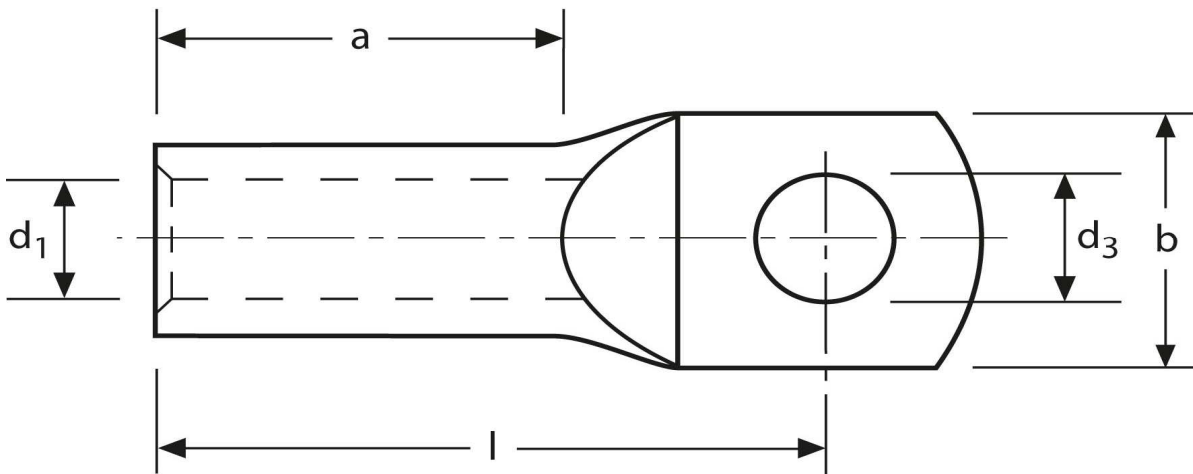


Rohrkabelschuhe

handelsüblich

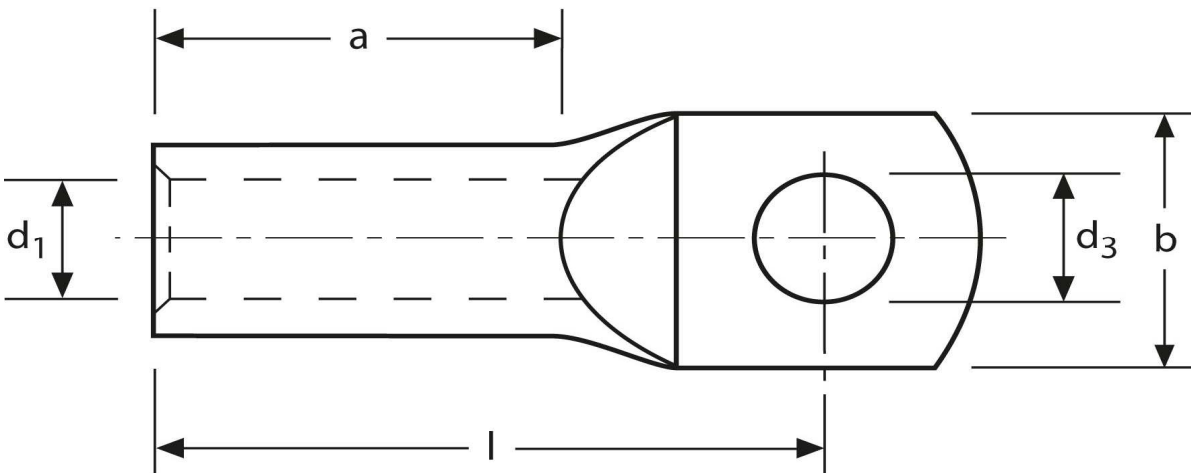
6 mm² M12



Art.Nr.	Werkstoff	Oberfläche		
K335120	E-CU	galv. Sn	6,3 / 1000	100
	d₃	d₁	b	
in mm:	13,0	3,5	19,0	
	l	a		
in mm:	25	9		

Stand: 09.10.2014

Tubular cable-lugs
 commercial
 6 mm² M12



part no.	material	surface		
K335120	E-CU	tin-plated	6,3 / 1000	100
	d₃	d₁	b	
in mm:	13,0	3,5	19,0	
	l	a		
in mm:	25	9		

date: 09.10.2014