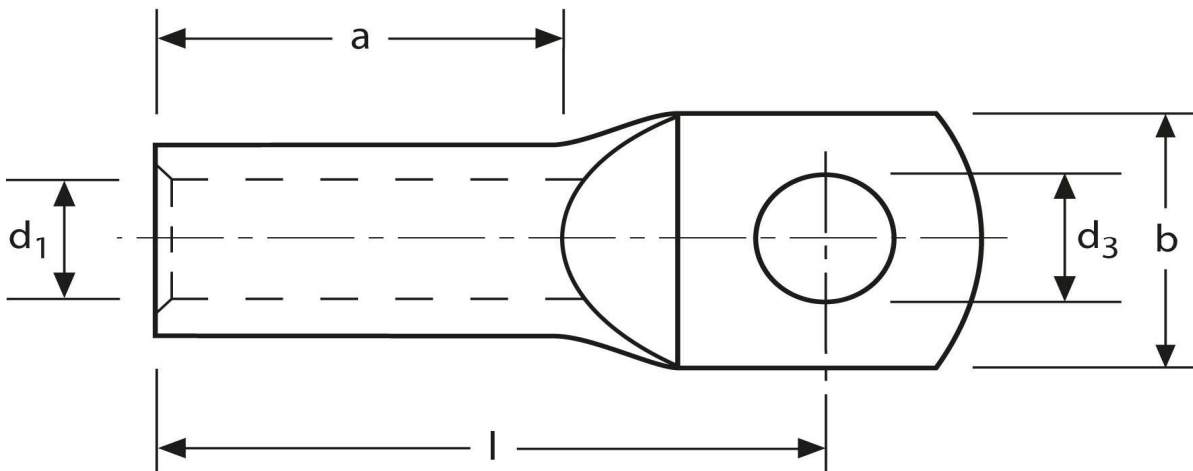


Rohrkabelschuhe

handelsüblich

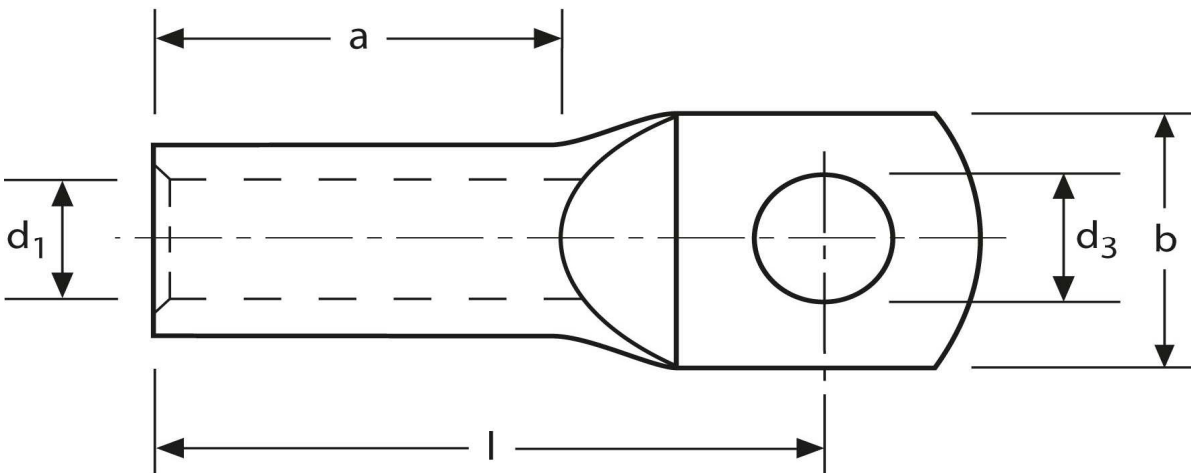
6 mm² M6



Art.Nr.	Werkstoff	Oberfläche		
K335060	E-CU	galv. Sn	4,7 / 1000	100
	d₃	d₁	b	
in mm:	6,5	3,5	11,4	
	l	a		
in mm:	21	9		

Stand: 09.10.2014

Tubular cable-lugs
 commercial
 6 mm² M6



part no.	material	surface		
K335060	E-CU	tin-plated	4,7 / 1000	100
	d₃	d₁	b	
in mm:	6,5	3,5	11,4	
	l	a		
in mm:	21	9		

date: 09.10.2014