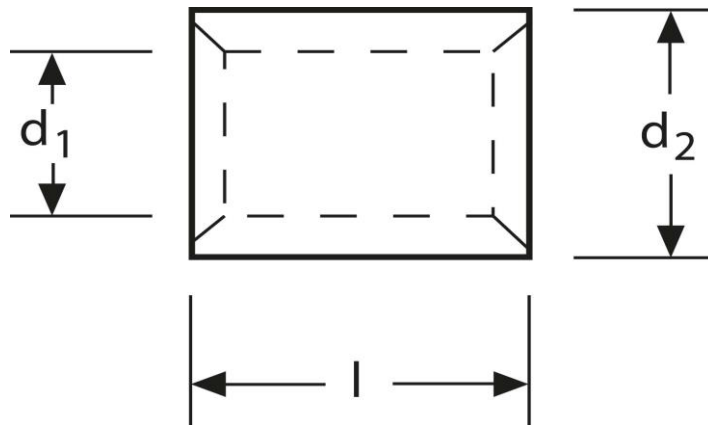


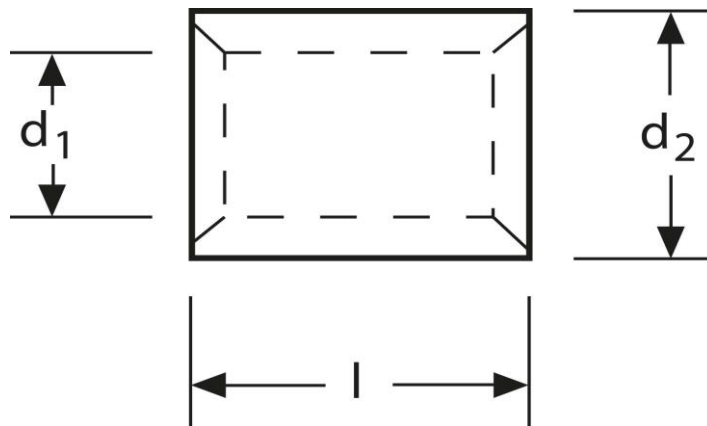
## Parallelverbinder 120 - 150 mm<sup>2</sup>



Art.Nr.	Werkstoff	Oberfläche		
K 333150	E-CU	galv. Sn	49,50 / 1000	50
	$d_1$	$l$	$d_2$	$s$
in mm:	19,0	26	25,4	3,2

Stand: 11.08.2014

## Parallel connectors 120 - 150 mm<sup>2</sup>



part no.	material	surface		
K 333150	E-CU	tin-plated	49,50 / 1000	50
	$d_1$	$l$	$d_2$	$s$
in mm:	19,0	26	25,4	3,2

date: 11.08.2014