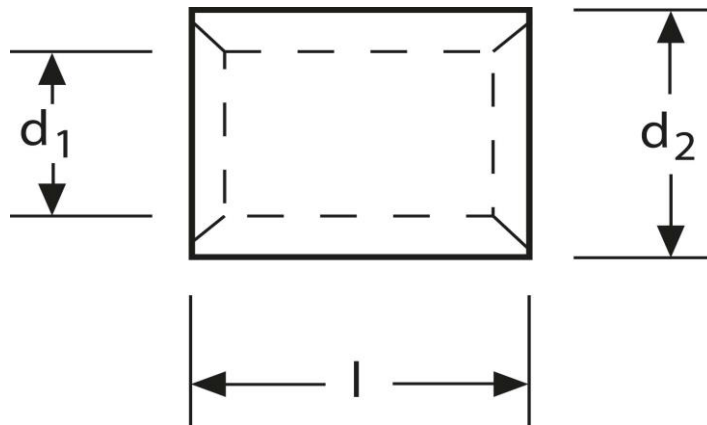


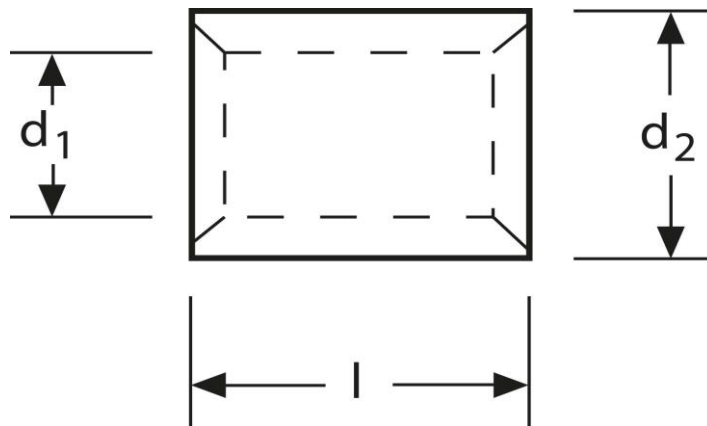
Parallelverbinder 95 - 120 mm²

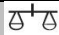



Art.Nr.	Werkstoff	Oberfläche		
K 333120	E-CU	galv. Sn	33,50 / 1000	50
	d_1	l	d_2	s
in mm:	16,5	22	22,5	3

Stand: 11.08.2014

Parallel connectors
 95 - 120 mm²



part no.	material	surface		
K 333120	E-CU	tin-plated	33,50 / 1000	50
	d_1	l	d_2	s
in mm:	16,5	22	22,5	3,0

date: 11.08.2014