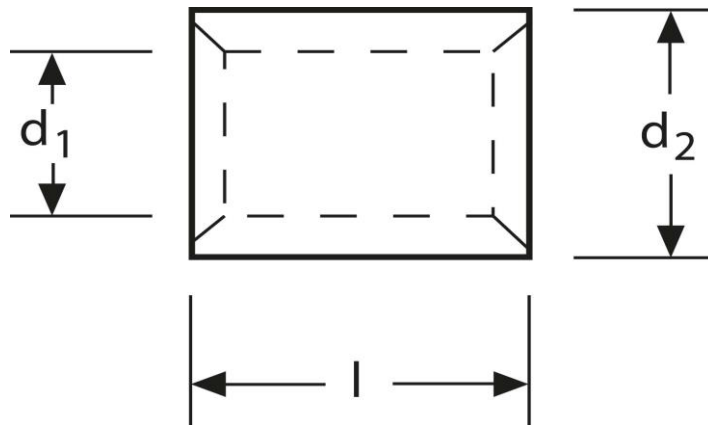


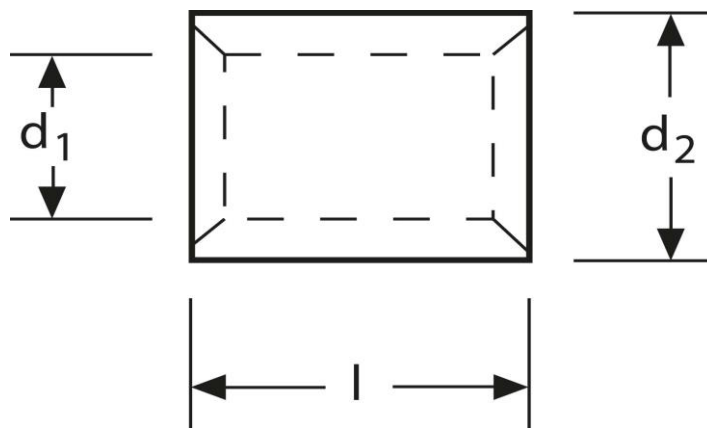
Parallelverbinder 70 - 95 mm²



Art.Nr.	Werkstoff	Oberfläche		
K 333095	E-CU	galv. Sn	24,00 / 1000	100
	d_1	l	d_2	s
in mm:	15,0	20	20	2,5

Stand: 11.08.2014

Parallel connectors 70 - 95 mm²



part no.	material	surface		
K 333095	E-CU	tin-plated	24,00 / 1000	100
	d_1	l	d_2	s
in mm:	15,0	20	20,0	2,5

date: 11.08.2014