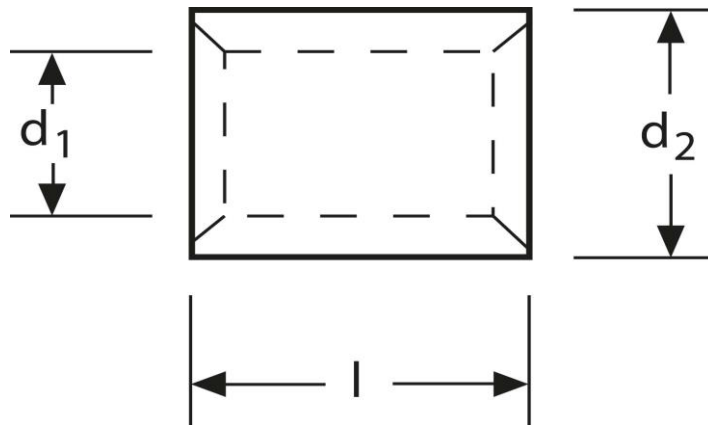


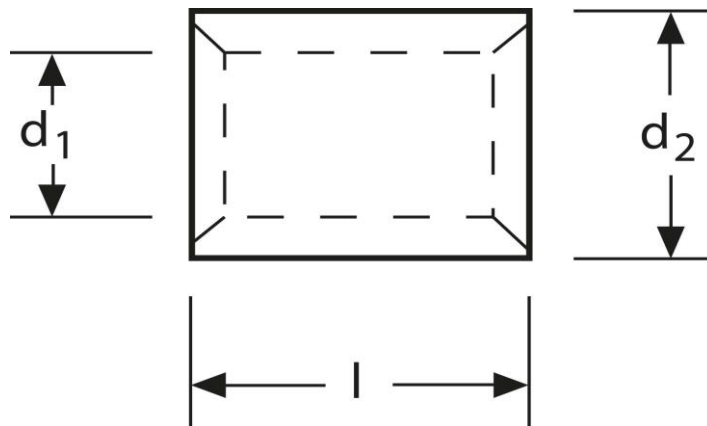
Parallelverbinder 10 - 16 mm²



Art.Nr.	Werkstoff	Oberfläche		
K 333016	E-CU	galv. Sn	2,46 / 1000	1.000
	d_1	l	d_2	s
in mm:	5,8	11	8,2	1,2

Stand: 11.08.2014

Parallel connectors 10 - 16 mm²



part no.	material	surface		
K 333016	E-CU	tin-plated	2,46 / 1000	1.000
	d_1	l	d_2	s
in mm:	5,8	11	8,2	1,2

date: 11.08.2014