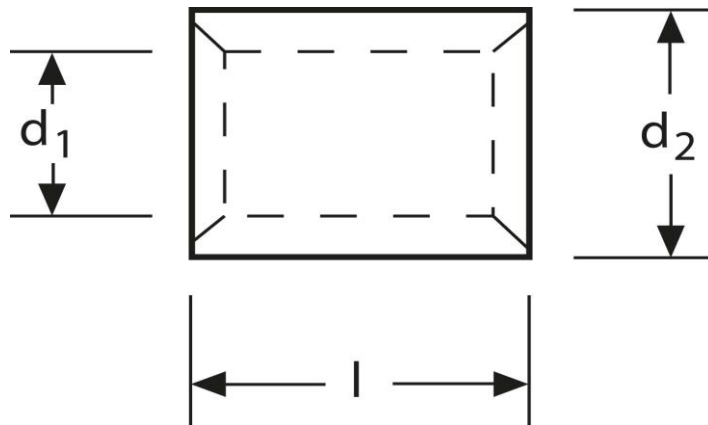


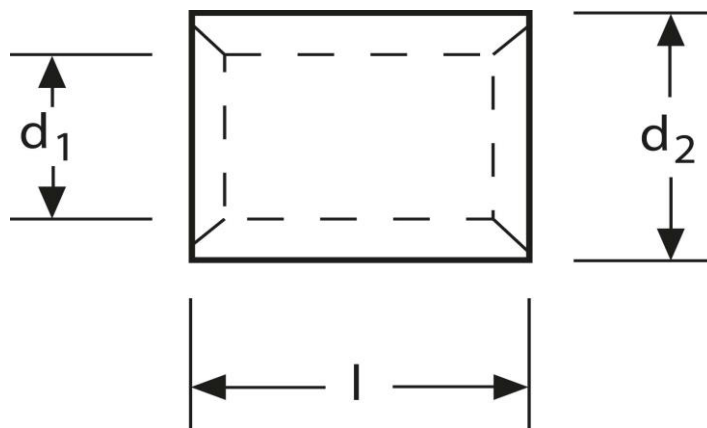
Parallelverbinder 6 - 10 mm²



Art.Nr.	Werkstoff	Oberfläche		
K 333010	E-CU	galv. Sn	1,65 / 1000	1.000
	d_1	l	d_2	s
in mm:	4,5	10	6,7	1,1

Stand: 11.08.2014

Parallel connectors 6 - 10 mm²



part no.	material	surface		
K 333010	E-CU	tin-plated	1,65 / 1000	1.000
	d₁	l	d₂	s
in mm:	4,5	10	6,7	1,1

date: 11.08.2014